

NWTD Stakeholder Liaison Group

25 February 2025

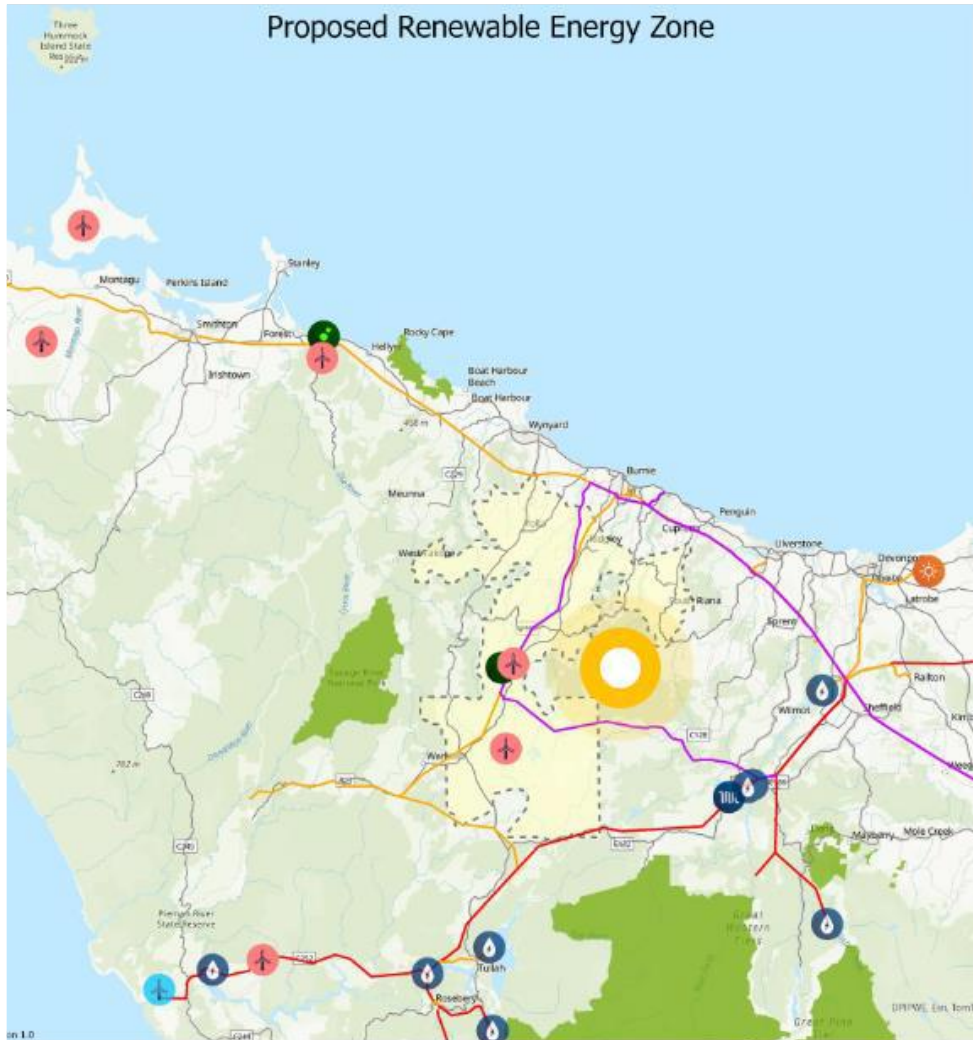
Today's agenda

- Round robin
- Clean Energy Centre of Excellence
- Economic Development Action Plan Review
- NWTD head contractor
- NWTD update
- Community investment
- Marinus Link update
- Local Energy Hubs campaign
- Member survey results

Member round robin

Clean Energy Centre of Excellence

The opportunity - jobs



The future energy sector needs technically skilled workers.

Development

Engineers (Civil, Electrical, Mechanical & Design)
IT Professionals
Science Technicians

Construction

Mechanical and Fabrication trades
Construction trades
Civil trades
Electricians
Machinery operators

Operations and Maintenance

Generation
Transmission
Distribution
Control room operators
Field technicians
Management

TAFE Centres of Excellence

- Established through the National Skills Agreement (NSA)
- Part of the nationally networked TAFE Centre's of Excellence which will:
 - Strengthen capability and capacity of the VET system to provide high quality and responsive skills training
 - Share best practice teaching and learning products across Australia
 - Position TAFEs as the foundation for innovation across the VET sector
 - Enable partnerships between the TAFE Centres of Excellence and universities strengthening connections across the tertiary sector.



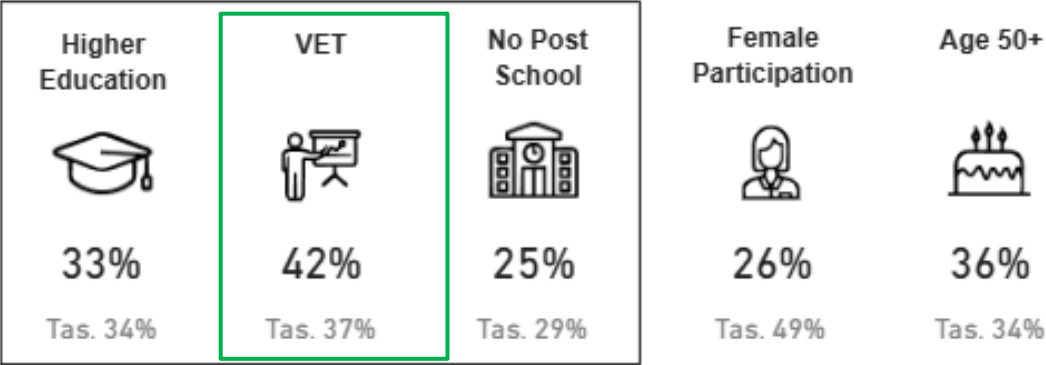
Workforce Projections

In 2024, the Construction, Electricity, Gas, Water and Waste Services industries employed more than **31,000 workers** across Tasmania.

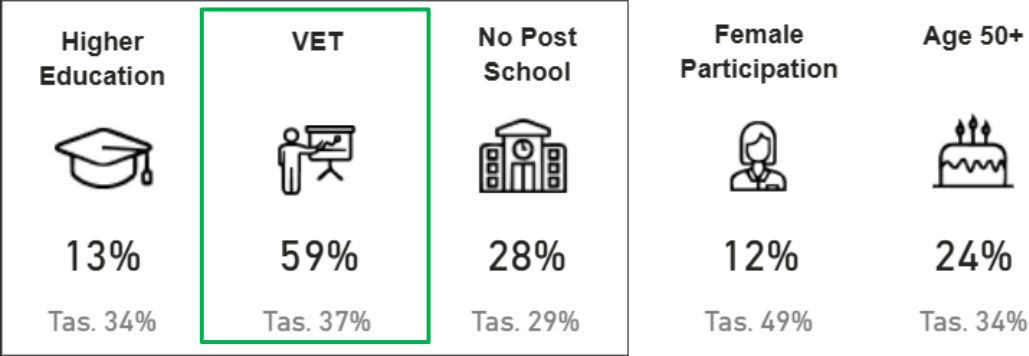
Base case employment growth from economic projections combined with retirements and workers leaving for other industries, projects the sectors will require over **2,675 total new workers** by 2027.

On average 37% of employed Tasmanian's hold a VET qualification, this percentage is significantly higher in both the Electrical (42%) and Construction sectors (59%)

Profile of Workers in Electricity, Gas, Water and Waste Services



Profile of Workers in Construction



The Centre of Excellence

Tasmanian Clean Energy Centre of Excellence (the Centre) will:

- Deliver purpose-built facilities at TasTAFE campuses in Burnie.
- Deliver on campus student accommodation
- Utilise contemporary training equipment.
- Place students at the centre of service delivery.
- Be grounded in an industry informed and evidence-based workforce needs assessment
- Consider the development of new training products, including micro-credentials and higher apprenticeships, for specific critical skills shortages.
- Aim to increase participation of priority learner cohorts in electrotechnology and related trades
- Pilot approaches to increasing industry participation in training at TasTAFE
- Deliver a pilot of an interactive STEM careers hub in Burnie and Associated Career Awareness Program
- Identify opportunities to work with partners in applied research for clean energy and related trades.

These deliverables will be overseen and influenced through an Advisory Committee.



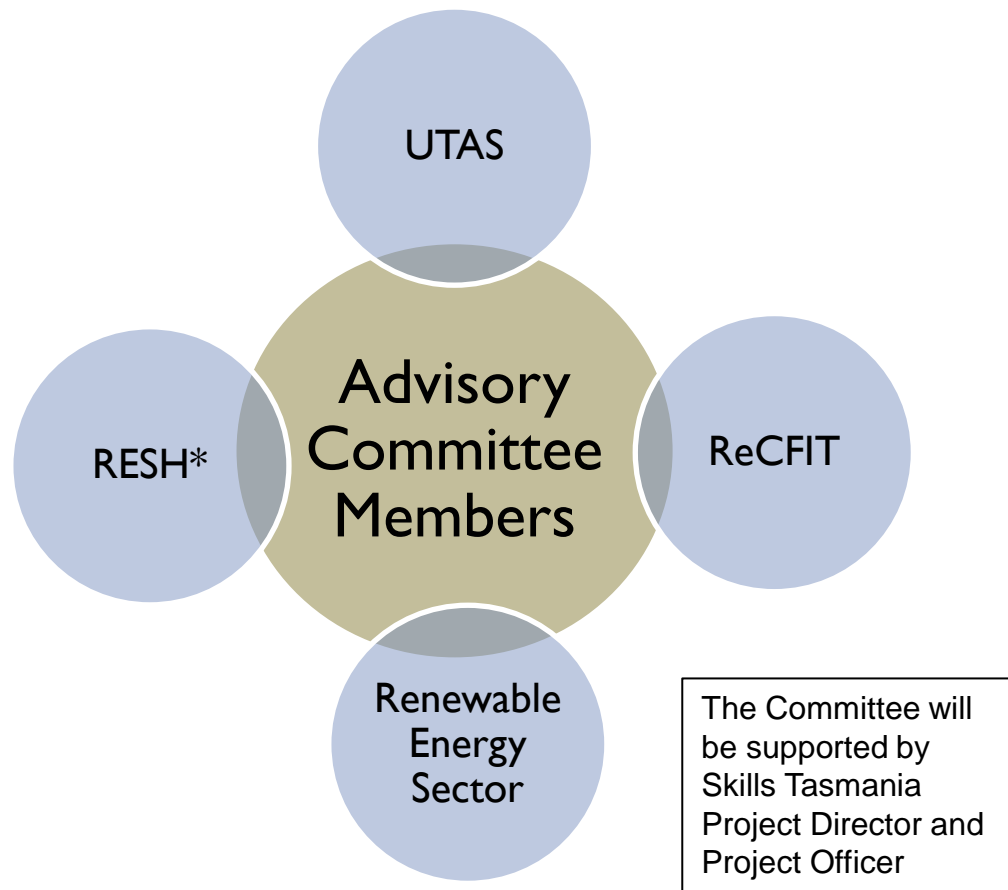
The Tasmanian Clean Energy Centre of Excellence Advisory Committee

Key deliverables:

1. Quality Delivery Plan – to drive more contemporary training at TasTAFE
2. A Workforce Needs Assessment - identify priority occupations and qualifications for the region over the next 10 years and beyond
3. Capital Investment Priorities Plan – identifying priority upgrades to buildings and equipment at the Burnie TasTAFE campus to ensure alignment with industry needs.



The Advisory Committee Members



The Advisory Committee and Committee Chair will be appointed under the *Training and Workforce Development Act 2013*.

The Advisory Committee is currently in the process of being formed from a broad cross section of industry and community stakeholders.

The Advisory Committee and Skills Tasmania will consult with the wider industry and community members throughout the project.

*RESH (Renewable Energy Services Hub, Bell Bay)

Economic Development Action Plan Review

Contents

- Scope of Work
- Economic Development Action Plan
Theme Areas & Strategic Objectives
- TasNetworks Progress
- Other Progress
- Discussion Questions
- Contact Information

Scope of Work

- To review progress to date against the NWTD economic development regional action plan
- To identify opportunities to refine the plan for the next phase of the project

Theme Areas & Objectives

Theme Area	Objective
1. Workforce development, skills and training	To stimulate and contribute to workforce development and a fair economy by unlocking a pipeline of projects in the renewable energy sector, contributing to decent wages, training opportunities, and good working conditions.
2. Procurement and opportunities for local businesses	To deepen local supply chains, support business development, and increase spending and investment in the local economy through procurement processes and decision making.
3. Infrastructure, assets and market benefits	To generate wealth, financial savings and market benefits for residents, local businesses and industry through the provision of more affordable, cleaner and reliable energy.
4. Local and regional community benefits	To generate flow-on economic, social and environmental benefits for local communities.
5. Public and private sector investment	To encourage and enable additional public and private sector investment in flow-on opportunities in renewable energy, manufacturing and other sectors.

TasNetworks Progress

- Jobs & skills information
- Procurement strategy
- Community Benefits Sharing Framework
- Community Investment Program
- Scholarship Program

Other Progress

- CCA's proposed Cumulative Impact Assessment
- CCA's proposed Clean Energy Education Hub Feasibility Study
- Tasmanian Clean Energy Centre of Excellence
- ICN's Renewable Energy Supply Chain Directory
- RECFIT's Renewable Energy Action Plan

Discussion Questions

1. Is the region ready for the construction phase of the project?
2. What areas of the action plan need to be progressed further? And how?
3. What are the key opportunities for the region as the project progresses to the construction phase?
4. What opportunities and actions can your organisation engage with and support?
5. How is your organisation best placed to deliver programs within the regional action plan?

NWTD head contractor: Genus

CONNECTING THE FUTURE. TOGETHER.

GenusPlus Group (ASX:GNP) is an end-to-end services provider for essential power and telecommunications infrastructure.

We provide an integrated service delivered through key complementary businesses to our clients in the resources, power, utilities and communications sectors across Australia.

Genus is highly leveraged to the substantial investment in network infrastructure required to drive the energy transition.

Built on a bedrock of three generations of accumulated family expertise, today the GenusPlus Group is a leading ASX-listed provider of critical infrastructure services to a blue-chip client base.



HEAD OFFICE



REPRESENTATIVE OFFICES/DEPOTS

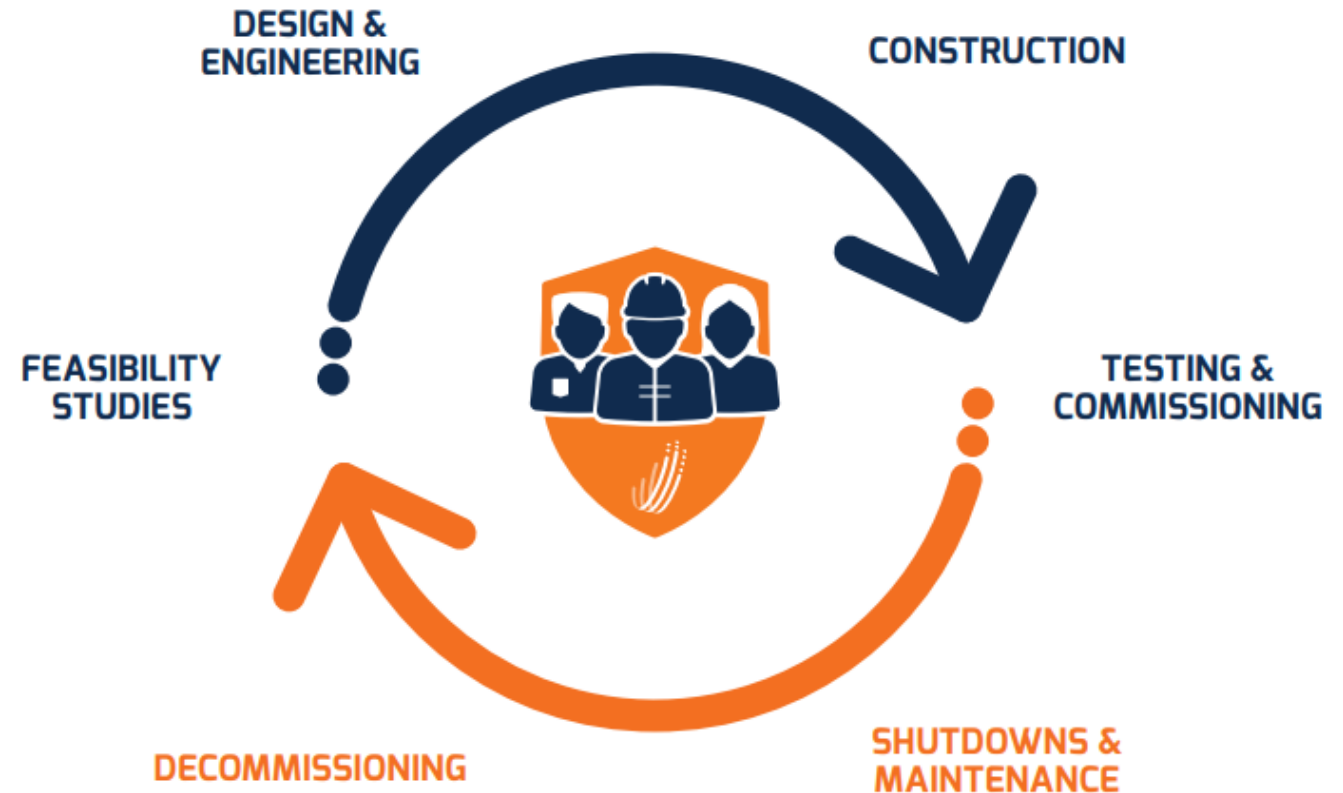


MAJOR PROJECTS

Expertise at every stage

At Genus, we maximise the life and profitability of our clients' assets by delivering reliable, schedule driven and cost-effective services at every stage.

We provide asset support solutions encompassing asset management and upgrades; shutdowns; general maintenance; operational support, services and decommissioning.



CONNECTING THE FUTURE. TOGETHER.

Infrastructure

Bringing together the industry-leading expertise and deep experience of Powerlines Plus and Proton Power, we offer a wide range of services including planning, designing, constructing, operating, testing, maintaining, managing and decommissioning power network assets.



Industrial Services

Innovative and fully integrated EPC Services for a comprehensive range of energy assets; and Design & Construction solutions for Renewable Energy projects. With a client base spread across the mining, oil and gas, infrastructure and power generation sectors, we have developed an enviable reputation for reliability and executional excellence.



Communications

From constructing state-of-the-art networks, to maintaining and upgrading existing infrastructure, our highly skilled teams are specialists in their field.

Our turnkey communications solutions span the full asset lifecycle from feasibility, engineering design, site acquisition, logistics, procurement, construction and integration through to operations and maintenance.



SAFETY NON-NEGOTIABLES



Our **Safety Non-Negotiables** are mandatory. They apply to all operations, team members and contractors. They are communicated at inductions, and regularly referred to during toolboxes and via health and safety communications.

Our core Value of **Mateship** drives us to look after ourselves and our mates. We need to work together to keep each other safe. One of our most important tools for doing this is our **Stop Work Authority**.

Everyone has the right to immediately stop work or behaviour that you deem to be unsafe to ourselves or to our workmates – If it's not safe, we don't do it.

NWTD update

Key milestones

Milestone	Estimated date
AER CPA 1 Determination	~February 2024
Lodge Environmental and Planning approvals with Tasmanian Planning Commission	April 2025
Community Engagement on Environmental and Planning approvals (ahead of public exhibition)	April / May 2025
Final Investment Decision (FID)	May 2025
Submission of CPA 2	August 2025
Construction commences	2026

EIS/DA drop-in sessions

- Wed, April 9 - Bracknell Memorial Hall (2-6pm)
- Thurs, April 10 - Future Energy Hub, Burnie (2-6pm)
- Fri, April 11 - Sheffield (venue TBC) (2-6pm)
- Sat, April 12 – TasNetworks' Deloraine Depot (11am-2pm)

Confirmed community engagement for 2025

- RAW Easter Egg Hunt, Bracknell, Sun 13 April
- Agfest, Carrick, Thu – Sat / 1 – 3 May
- Burnie Show, Fri – Sat / 3 – 4 October
- Tulip Festival, Wynyard, Sat 11 October
- Tasmanian Craft Fair, Deloraine, Fri – Sun 31 Oct – 2 Nov
- Taste of the North West, TBC



Community investment

Community grants in action



Reopening of the Mole Creek Swimming Pool

Royal Life Saving Tasmania provided vital training for 14 lifeguards to enable the Mole Creek pool to reopen just in time for summer. The pool had been unable to operate for the past two years, depriving the community of a vital recreational resource.

RAW Easter Egg Hunt

- As part of NWTD's partnership arrangements, Rural Alive and Well (RAW) will again host an Easter Egg Hunt in Bracknell.
- The NWTD project partnered with RAW last year with 184 community members attending the inaugural event.
- The Easter Egg Hunt is aimed at promoting social connection and building resilient communities.
- The event will be held on Sunday, 13 April.



Marinus Link update

Marinus Link – Status Update

✓ **Tasmania Enviro Approvals Process**

- ✓ Public Exhibition - closed 18th February
- ✓ Engagement sessions extremely positive
- ✓ Awaiting feedback on submissions

✓ **Balance of Works**

- ✓ Shortlisted two consortiums:
 - ✓ TasVic Greenlink
 - ✓ Empower
- ✓ Meet the Proponents – Monday 17 February @ Burnie Arts
- ✓ Preferred contractor selected – mid 2025

✓ **FID - mid 2025**

Community Engagement – Jan / Feb ‘25

- 31 December – Illuminate Burnie 2025 with SeaFM
- 28 January to 2 February – DA / EIS Public Exhibition
 - 3 drop-ins at Future Energy Hub
 - 2 webinars
 - 1 drop-in Heybridge
 - 1 drop-in Burnie Plaza
 - Markets at Burnie and Wynyard
 - Business NorthWest presentation
- 17 February Meet the proponents
 - 150+ at Burnie Arts (plus 2 sessions in Gippsland)

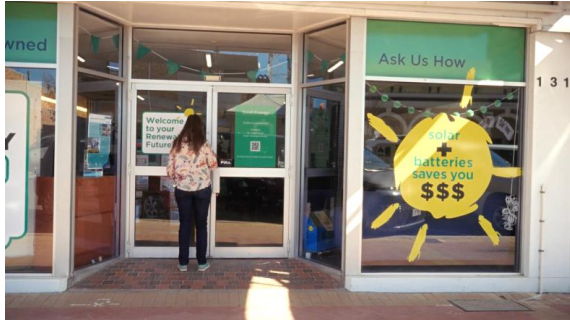


Upcoming Community Engagement

- ✓ Burnie City Council 'Food and Feedback' 15 March
- ✓ Ecofest 5/6 April
- ✓ Agfest? TBC
- ✓ Also more markets.....

Local Energy Hubs campaign

OUR POLICY AND FUNDING ASK



It's time to invest in the human side of the shift to renewables.



We are calling on the federal government to fund 50 Local Energy Hubs in regional communities across Australia, supported by a national coordinating agency.

Once fully operating, we estimate this will cost \$150m per year - a tiny fraction of the tens of billions of dollars of investment in renewables coming over the next decade.



Our 2025 federal pre-budget submission, we proposed an initial commitment of \$88m over 4 years to set up the national coordinating agency and establish the first 15 Hubs.

There are already existing groups doing some Hub functions, with great success, but they are struggling and under-resourced

E.g. GeniEnergy, Gippsland Climate Change Network





THE SOLUTION: LOCAL ENERGY HUBS

50 across Australia, staffed by local people and in partnership with existing groups

Supported through a national coordination body

Providing independent information, advice and support, using trusted messengers

Empowering regional communities in the energy transition

Meet people where they are, support local needs and reduce the threat and spread of misinformation

Programs to improve local outcomes from large scale projects, to better involve local stakeholders, and to support households, farms, community groups and businesses do renewables too

Any other business?



www.tasnetworks.com.au