



Distribution Overhead Construction Standard

Section 11 Clearances

Record Number: R0002730491

Version Number: 3.0

Date: June 2026

Authorisations

Action	Name and title	Date
Prepared by	Tetiana Knyzhka	05/06/2026
Reviewed by	Brock Wolski	10/06/2026
Authorised by	Branden Papalia	22/06/2026
Review cycle	5 Years	

Responsibilities

This document is the responsibility of the Asset Management Systems and Standards Team, Tasmanian Networks Pty Ltd, ABN 24 167 357 299 (hereafter referred to as "TasNetworks").

Please contact the Asset Management Systems and Standards Team with any queries related to this standard.

Record of revisions

Version	Description	Date
3.0	Major update: Section fully revised to reflect current construction requirements.	22/06/2026

D-OHC-P001-SD-001	CLEARANCES. VEGETATION CLEARANCES. URBAN / RURAL AREAS. BARE CONDUCTORS
D-OHC-P001-SD-002	CLEARANCES. VEGETATION CLEARANCES. URBAN / RURAL AREAS. ABC & ADSS / FOC
D-OHC-P002-SD-001	CLEARANCES. RAILWAY CROSSINGS. CONDUCTOR SEPARATION & CONSTRUCTION DETAILS
D-OHC-P002-SD-002	CLEARANCES. RAILWAY CROSSINGS. CONDUCTOR SEPARATION & CONSTRUCTION DETAILS
D-OHC-P003-SD-001	CLEARANCES. FLAMMABLE MATERIALS. CLEARANCES FROM DISTRIBUTION EQUIPMENT
D-OHC-P004-SD-001	CLEARANCES. DISTRIBUTION MAINS CLEARANCES FROM GROUND AND STRUCTURES
D-OHC-P004-SD-002	CLEARANCES. DISTRIBUTION MAINS CLEARANCES FROM GROUND AND STRUCTURES. NOTES
D-OHC-P005-SD-001	CLEARANCES. INTERCIRCUIT CLEARANCES. MINIMUM SPACING BETWEEN CIRCUITS AT A POLE
D-OHC-P005-SD-002	CLEARANCES. INTERCIRCUIT CLEARANCES. MINIMUM IN-SPAN SPACING BETWEEN CIRCUITS ON COMMON POLES
D-OHC-P005-SD-003	CLEARANCES. INTERCIRCUIT CLEARANCES. MINIMUM IN-SPAN SPACING BETWEEN CIRCUITS AT UNATTACHED CROSSING
D-OHC-P005-SD-004	CLEARANCES. INTERCIRCUIT CLEARANCES. MINIMUM SPACING FROM INTER-SPAN POLES
D-OHC-P006-SD-001	CLEARANCES. CLEARANCES FROM TELECOMMUNICATIONS INFRASTRUCTURE. ADSS / FOC
D-OHC-P006-SD-002	CLEARANCES. CLEARANCES FROM TELECOMMUNICATIONS INFRASTRUCTURE. PSTN & TASNWORKS EARTHS
D-OHC-P007-SD-001	CLEARANCES. CLEARANCES FROM STAY WIRES. GROUND CLEARANCE & CLEARANCE FROM MAINS
D-OHC-P008-SD-001	CLEARANCES. CLEARANCES FROM PUBLIC LIGHTING INFRASTRUCTURE

1 2 3 4 5 6 7

A

B

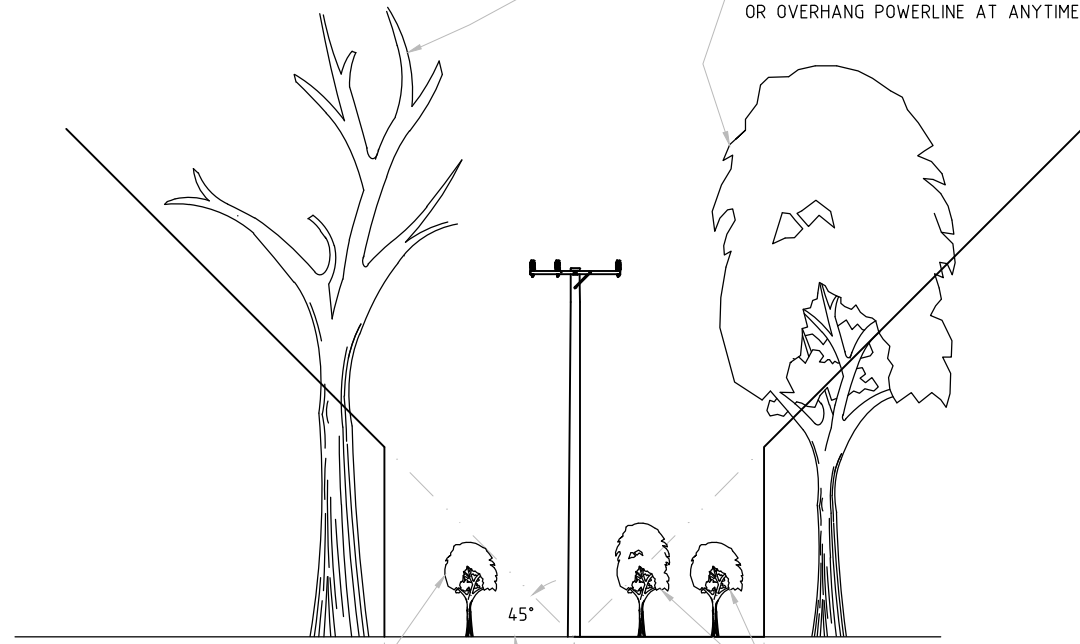
C

D

E

TREES OR LIMBS THAT ARE CONSIDERED UNSOUND AND LIABLE TO FALL INTO THE POWERLINE ARE TO BE REMOVED

REMOVE TREES OR TRIM LIMB TO MAIN TRUNK IF TREE IS LIKELY TO GROW WITHIN 6m OF POWERLINE OR OVERHANG POWERLINE AT ANYTIME IN THE FUTURE



SPECIES WITH MAXIMUM MATURE GROWTH HEIGHT OF LESS THAN 3m NEED NOT BE CUT

SPECIES WITH MAXIMUM MATURE GROWTH HEIGHT OF GREATER THAN 3m ARE TO BE REMOVED AT GROUND LEVEL AND THE STUMP POISONED

NEW OR UPGRADED POWERLINES

THE AIM OF CLEARING FOR NEW OR UPGRADED POWERLINE ROUTES IS FOR TASNETWORKS TO UNDERTAKE MINIMAL VEGETATION CLEARING IN THE FUTURE.

ACHIEVEMENT OF THIS AIM MAY NECESSITATE THE CONSIDERATION OF OTHER SUPPLY ALTERNATIVES E.G. UNDERGROUND, AERIAL BUNDLED CONDUCTOR, ALTERNATIVE LINE ROUTE ETC.

WHERE BARE HV CAN BE REPLACED BY LVABC ON PRIVATE LAND TASNETWORKS CAN RETAIN OWNERSHIP OF LOW VOLTAGE POLES AND CONDUCTORS PROVIDING A REGISTERED EASEMENT IS GRANTED BY THE PROPERTY OWNER. THIS WILL ASSIST WITH FUTURE OWNERSHIP CONFIRMATION.

IT IS ACCEPTED THAT ACHIEVEMENT OF THESE CLEARANCES MAY NOT BE POSSIBLE FOR SOME TREES IN URBAN AREAS AND ALONG SOME ROADSIDES. IN THESE SITUATIONS, WHERE BARE OVERHEAD CONSTRUCTION IS STILL REQUIRED, CLEARANCES LISTED IN THE RELEVANT TABLES IN CHAPTER 8A OF THE TASMANIAN ELECTRICITY CODE SHOULD BE INCREASED TO ALLOW FOR A FURTHER TWO CYCLES OF RE-GROWTH.

NOTES:

1. CYCLES ARE GENERALLY TWO YEARS IN RURAL AREAS, AND ONE YEAR IN URBAN AREAS.
2. HAZARDOUS VEGETATION OUTSIDE THE CLEARANCE ZONE TO BE REMOVED OR TRIMMED.
3. OVERHANGING LIMBS IN RURAL AREAS ARE GENERALLY NOT ALLOWED. EXCEPTIONS ARE TO BE RARE AND SUBJECT TO A RIGOROUS RISK MANAGEMENT ASSESSMENT AND RECORDING.
4. ACCESS TO THE EASEMENT MUST BE ACHIEVED TO ALLOW FOR FUTURE MAINTENANCE AND FAULT RESPONSE.

EMF/PDF CREATION DATE 08/05/2026

ALTERATIONS ORIGINAL ISSUE

REFERENCE

DRAWN	ANSS
DRAFTING CHECK	ANSS
DESIGNED BY	T.JONZHRA
CHECKED BY	B.WOLSKI
APPROVED BY	B.PAPALIA
DATE APPROVED	22-06-2024

© Tasmanian Networks PTY. LTD. trading as TasNetworks ABN 24 167 957 299		NO PART OF THIS DRAWING MAY BE REPRODUCED, STORED IN A RETRIEVAL SYSTEM IN ANY FORM, OR TRANSMITTED BY ANY MEANS WITHOUT THE PRIOR PERMISSION OF TASNETWORKS	
TITLE CLEARANCES VEGETATION CLEARANCES URBAN / RURAL AREAS BARE CONDUCTORS		SCALE NTS A4 REVISION B	
D - OHC - P001 - SD - 001			

BM DWG NO D-OHC-P001-SD-001

BM REV B

A

B

C

D

E

INSPECTION AREA

CLEARING AREA

INSPECTION AREA

REFER TO SCHEDULE OF MINIMUM CLEARANCES

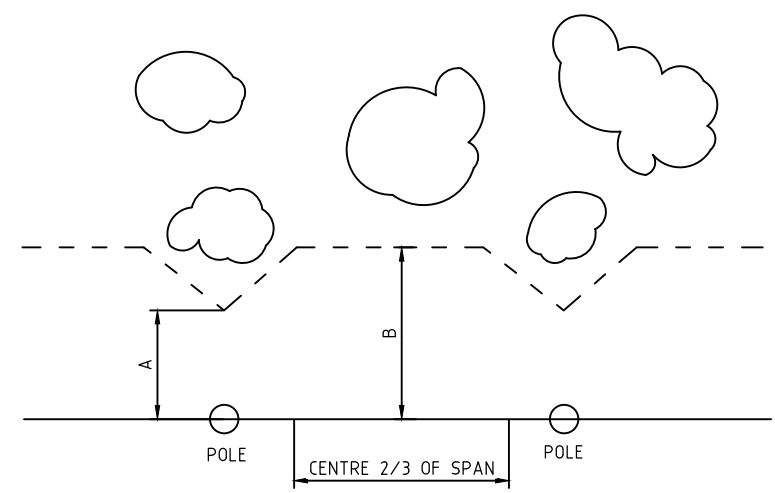
SEE NOTE 1

TREES OR LIMBS WITHIN THE INSPECTION AREA THAT ARE CONSIDERED UNSOUND AND LIABLE TO FALL INTO THE CLEARING AREA ARE TO BE REMOVED

45°

SPECIES WITH MAXIMUM HEIGHT OF UP TO 4m NEED NOT BE CUT

TREES THAT ARE UNDER OR BESIDE THE LINE AND ARE WITHIN OR WILL GROW INTO THE CLEARING AREA SHOULD BE CUT BACK SUFFICIENTLY TO ALLOW FOR REGROWTH UP TO THE NEXT PROGRAMMED CUTTING



ABC VEGETATION CLEARANCES

VOLTAGE	CLEARANCE AT POLE (A)	CLEARANCE TO STILL CABLE CENTRE 2/3 OF SPAN (B)		
		SPAN <45m	SPAN 45-75m	SPAN >75m
LV	0.6m	0.6m	1.0m	URBAN (~50m): 1.5m
				RURAL (~150m): 2.1m
HV	0.7m	0.7m	1.2m	URBAN (~50m): 1.8m
				RURAL (~150m): 3.0m

ADSS / FOC VEGETATION CLEARANCES

CLEARANCE AT POLE (A)	CLEARANCE TO STILL CABLE (B)		
	SPAN <40m	SPAN 40-70m	SPAN >70m
0.6m	0.3m	0.6m	0.9m

NOTE:

RADIAL CLEARANCES APPLY - BOTH VERTICAL AND HORIZONTAL. INITIAL CLEARING SHOULD ALLOW FOR REGROWTH OVER CLEARING CYCLE.

NOTE:
THESE ARE THE MINIMUM CLEARANCES AND AT THE TIME OF CUTTING AN ALLOWANCE OF THREE YEARS REGROWTH SHOULD BE MADE.

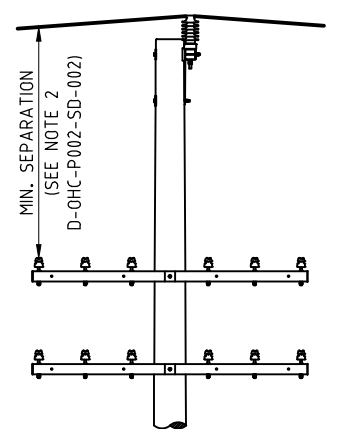
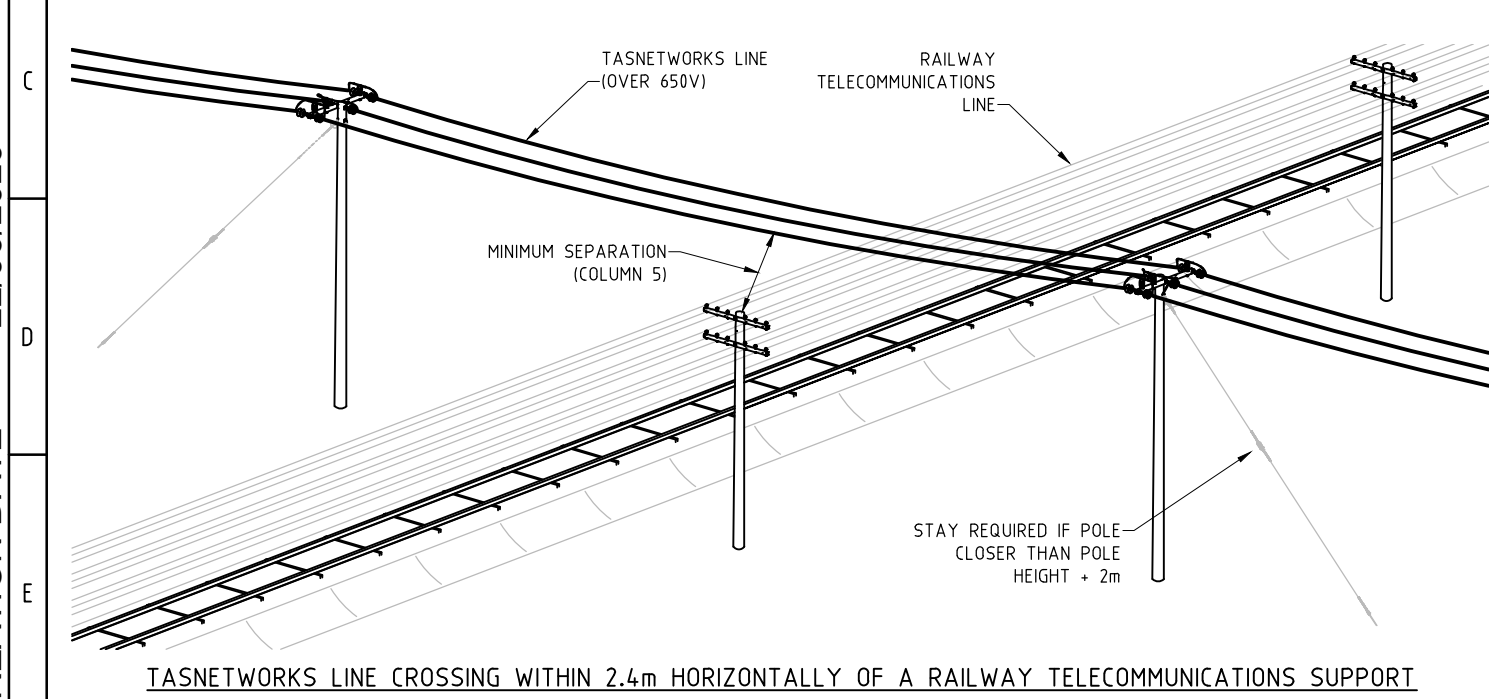
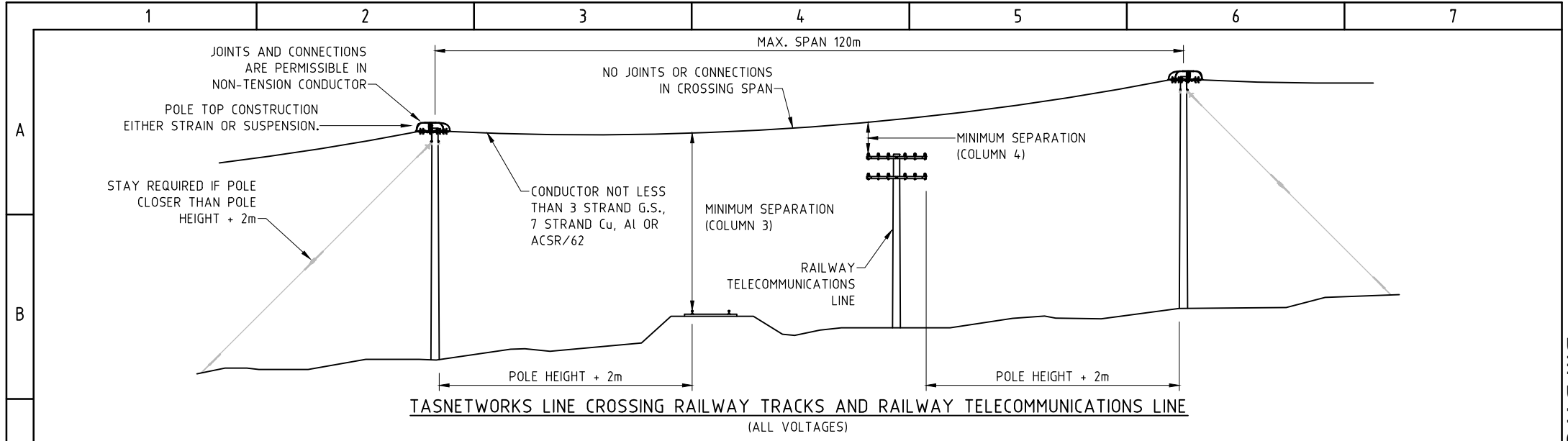
EMF/PDF CREATION DATE 08/05/2026

ALTERATIONS ORIGINAL ISSUE

REFERENCE
NEW DRAWING

DRAWN	ANSS
DRAFTING CHECK	ANSS
DESIGNED BY	T.KINZYRHA
CHECKED BY	B.WOLSKI
APPROVED BY	B.PAPALIA
DATE APPROVED	22-06-2024

© Tasmanian Networks PTY. LTD. trading as TasNetworks ABN 24 167 957 299		NO PART OF THIS DRAWING MAY BE REPRODUCED, STORED IN A RETRIEVAL SYSTEM IN ANY FORM, OR TRANSMITTED BY ANY MEANS WITHOUT THE PRIOR PERMISSION OF TASNETWORKS	
TITLE CLEARANCES VEGETATION CLEARANCES URBAN / RURAL AREAS ABC & ADSS / FOC			SCALE NTS
D - OHC - P001 - SD - 002			A4
			REVISION A



TASNETWORKS LV LINE (0-650V) ATTACHED TO RAILWAY TELECOMMUNICATIONS SUPPORT

NOTES:

- REFER D-OHC-P002-SD-002 FOR TABLE AND NOTES
- ALL DIMENSIONS ARE IN MILLIMETRES UNLESS OTHERWISE STATED.

EMF/PDF CREATION DATE 22/06/2026 ALTERATIONS ORIGINAL ISSUE	REFERENCE NEW DRAWING: SUPERSEDES D-OHC-P002-SD-001	TasNetworks MEGAVAR PTY LTD DRAFTING CHECK MEGAVAR PTY LTD DESIGNED BY T.XINYI CHECKED BY B.WOLSKI APPROVED BY B.PAPALIA DATE APPROVED 22-06-2026	© Tasmanian Networks PTY. LTD. trading as TasNetworks ABN 24 167 357 299	NO PART OF THIS DRAWING MAY BE REPRODUCED, STORED IN A RETRIEVAL SYSTEM IN ANY FORM, OR TRANSMITTED BY ANY MEANS WITHOUT THE PRIOR PERMISSION OF TASNETWORKS	TITLE CLEARANCES RAILWAY CROSSINGS CONDUCTOR SEPARATION & CONSTRUCTION DETAILS	SCALE NTS A4 REVISION A
	D - OHC - P002 - SD - 001		D - OHC - P002 - SD - 001			

TASNETWORKS SHALL, BEFORE UNDERTAKING WORK ON ANY NEW CROSSING OR REARRANGING AN EXISTING CROSSING, CONSULT WITH TASRAIL AND OBTAIN APPROVAL OF THE PROPOSAL.

COL 1	NOMINAL VOLTAGE OF POWER CONDUCTORS	MINIMUM SEPARATION (m)		
		RAILWAY TRACKS (NEAREST RAIL)	TELECOMMUNICATIONS CONDUCTORS/CABLES	TELECOMMUNICATIONS SUPPORT
1	UP TO 650V	5.5	0.9	BY APPROVED ATTACHMENT (NOTE 2)
2	OVER 650V TO 11KV	6.7	1.2	3.7
3	OVER 11KV TO 66KV	6.7	2.1	4.0
4	OVER 66KV TO 132KV	6.7	3.0	4.6
5	OVER 132KV TO 220KV	6.7	3.7	5.1

NOTES:

- SEPARATIONS IN COLUMN 5 APPLY TO WHERE TASNETWORKS CONDUCTORS ARE WITHIN A HORIZONTAL DISTANCE OF 2.4m FROM THE VERTICAL PROJECTION OF THE NEAREST POINT OF A TELECOMMUNICATION SUPPORT.
- WHERE TASNETWORKS LV CONDUCTORS SHARE THE SAME POLE AS TASRAIL'S CONDUCTORS, THERE SHALL BE A SEPARATION OF 2.4m FOR BARE LV OR 1.8m INSULATED LV.

REQUIREMENTS FOR SPANS CROSSING RAILWAY INFRASTRUCTURE

- MAXIMUM SPAN LENGTH: 120m.
- ANGLE OF CROSSING: 45° - 90°.
- MINIMUM CONDUCTOR SIZE: 3/2.75 SC/GZ, OR AT LEAST 7 STRANDS FOR OTHER MATERIALS.
- CONSTRUCTIONS ON ADJACENT POLES: STRAIN OR SUSPENSION TYPES.
- NO TENSION JOINTS OR CONNECTIONS IN CROSSING SPAN.
- POLES TO BE:
 - LOCATED AT A DISTANCE EQUAL TO POLE HEIGHT + 2m AWAY FROM TRACK OR TELECOMMUNICATIONS CONDUCTORS, OR
 - STAYED SO THAT THEY CANNOT FALL ONTO TRACKS OR TELECOMMUNICATIONS CONDUCTORS IN THE EVENT OF POLE BASE FAILURE.

EMF/PDF CREATION DATE 08/05/2026

A

B


C

D

E

ALTERATIONS ORIGINAL ISSUE

REFERENCE	
NEW DRAWING	

 TasNetworks	
DRAWN	ANSS
DRAFTING CHECK	ANSS
DESIGNED BY	T.KNYZHKA
CHECKED BY	B.WOLSKI
APPROVED BY	B.PAPALIA
DATE APPROVED	22-06-2026

© Tasmanian Networks PTY. LTD. trading as TasNetworks ABN: 24 167 357 299		NO PART OF THIS DRAWING MAY BE REPRODUCED, STORED IN A RETRIEVAL SYSTEM IN ANY FORM, OR TRANSMITTED BY ANY MEANS WITHOUT THE PRIOR PERMISSION OF TASNETWORKS	
TITLE CLEARANCES RAILWAY CROSSINGS CONDUCTOR SEPARATION & CONSTRUCTION DETAILS		SCALE NTS	REVISION A
D - OHC - P002 - SD - 002		A4	

BM DWG NO D-OHC-P002-SD-002

BM REV A

1	2	3	4	5	6	7
---	---	---	---	---	---	---

A	DISTRIBUTION EQUIPMENT	HAZARDOUS AREA			MINIMUM SAFETY MARGIN (TO BE ADDED TO HAZARD ZONE)	RECOMMENDED HORIZONTAL CLEARANCE* (HAZARDOUS AREA + SAFETY MARGIN)		
		PETROL AND LPG STORAGE TANKS	DIESEL STORAGE TANKS & DISPENSING STATION	PETROL AND LPG DISPENSING STATION		PETROL AND LPG STORAGE TANKS	DIESEL STORAGE TANKS & DISPENSING STATION	PETROL AND LPG DISPENSING STATION
	DISTRIBUTION POLE OR SUBSTATION WITH EDO FUSES	15m	5m	8m	10m	25m	15m	18m
	HV LINKS, AIR-BREAK SWITCHES, HRC FUSES AND LIGHTNING ARRESTERS	15m	3m	8m	5m	20m	8m	13m
	GROUND TYPE SUBSTATIONS AND INDOOR SUBSTATIONS	15m	4m	8m	1m	16m	5m	9m
	LV POLE WITH FUSES, PILLARS AND TURRETS, OR LV SERVICE FUSES	15m	3m	8m	1m	16m	4m	9m

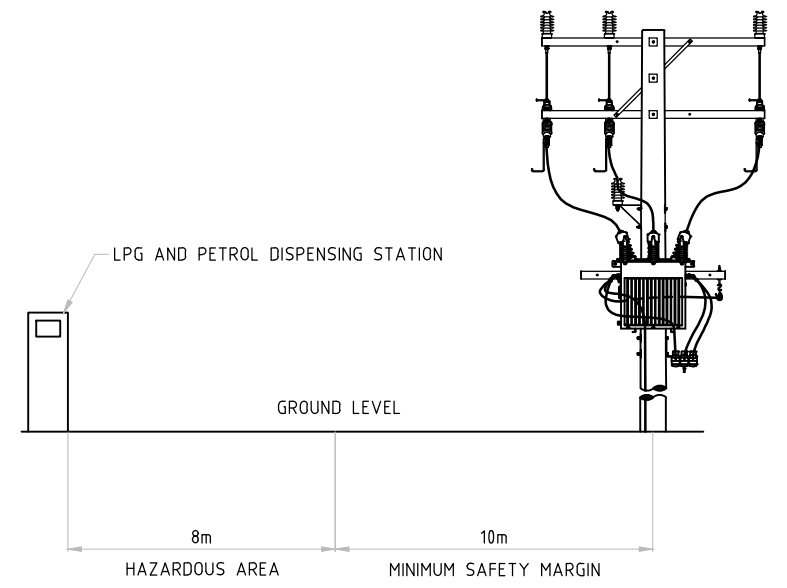
REFER AS/NZS 60079.10.1 - EXPLOSIVE ATMOSPHERES – SPECIFIC OCCUPANCIES. NONE OF THE DISTRIBUTION EQUIPMENT LISTED SHOULD BE LOCATED WITHIN THE RECOMMENDED HORIZONTAL CLEARANCE, MEASURED FROM THE SOURCE OF THE HAZARD.

C

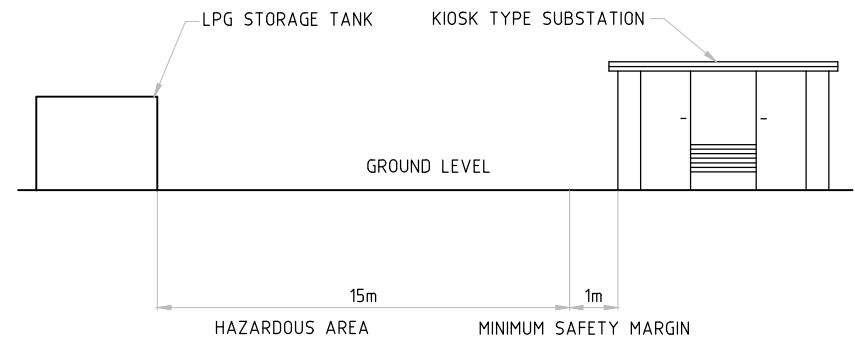
D

E

- NOTES:
- WHERE THE RECOMMENDED MINIMUM HORIZONTAL CLEARANCE CANNOT BE ACHIEVED, THE HAZARDOUS AREA MAY BE REDUCED IN ACCORDANCE WITH AS/NZS 60079.10.1.
 - THE RECOMMENDED HORIZONTAL CLEARANCE INDICATED IS THE HORIZONTAL DISTANCE MEASURED IN ANY DIRECTION FROM THE SOURCE OF THE HAZARD TO THE BOUNDARY OF THE EQUIPMENT INSTALLED AT GROUND LEVEL, OR CENTRE OF POLE FOR OVERHEAD EQUIPMENT.
 - THE HAZARDOUS AREA FOR LPG DISPENSING STATIONS IS EITHER 8m HORIZONTALLY FROM THE CABINET OR 3m HORIZONTALLY FROM THE HOSE NOZZLE, WHICHEVER IS THE GREATER.
 - CYLINDER FILLING: THE HAZARDOUS AREA FOR OUTDOOR CYLINDER FILLING IS 7m HORIZONTALLY FROM THE FILL POINT.
 - OUTDOOR CYLINDER INSTALLATION, IN SITU FILL TYPE: THE HAZARDOUS AREA EXTENDS 10m HORIZONTALLY FROM ANY CYLINDER VALVE. THE HAZARDOUS AREA MAY BE REDUCED IN ACCORDANCE WITH AS/NZS 60079.10.1.



EXAMPLE 1



EXAMPLE 2

EMF/PDF CREATION DATE 08/05/2026

ALTERATIONS	ORIGINAL ISSUE		REFERENCE
-------------	----------------	--	-----------

DRAWN	ANSS
DRAFTING CHECK	ANSS
DESIGNED BY	T.KINZHIRA
CHECKED BY	B.WOLSKI
APPROVED BY	B.PAPALIA
DATE APPROVED	22-06-2024

© Tasmanian Networks PTY. LTD. trading as TasNetworks ABN 24 167 957 299	NO PART OF THIS DRAWING MAY BE REPRODUCED, STORED IN A RETRIEVAL SYSTEM IN ANY FORM, OR TRANSMITTED BY ANY MEANS WITHOUT THE PRIOR PERMISSION OF TASNETWORKS
TITLE CLEARANCES FLAMMABLE MATERIALS CLEARANCES FROM DISTRIBUTION EQUIPMENT	SCALE NTS A4
D - OHC - P003 - SD - 001	REVISION B

BM DWG NO D-OHC-P001-SD-001

BM REV B


1		2		3		4		5		6		7	
CLEARANCE TYPE	LOCATION DESCRIPTION			DIMENSION CODE (see 10.1.3)	DIRECTION	LV		HV 1kV - 33kV			HV >33kV, <132kV		
						ABC	BARE	BARE & COVERED CONDUCTOR	INSULATED WITHOUT EARTH SCREEN	INSULATED WITH EARTH SCREEN	BARE & COVERED CONDUCTOR		
GROUND	ROADS	OVER THE CARRIAGEWAY			VERTICALLY	5.5m	5.5m	6.7m	6.0m	5.5m	6.7m		
		OVER ROADWAY OTHER THAN THE CARRIAGEWAY			VERTICALLY	5.5m	5.5m	5.5m	5.5m	5.5m	6.7m		
	OTHER	PRIVATE DRIVEWAYS AND LAND TRAVERSABLE BY VEHICLES MORE THAN 3m IN HEIGHT (EXCEPT SERVICE STATIONS AND FARMS)			VERTICALLY	5.5m	5.5m	5.5m	5.5m	5.5m	6.7m		
		AREAS NOT NORMALLY ACCESSIBLE TO VEHICLES MORE THAN 3m IN HEIGHT (E.G. SWAMPY AREAS, GRADIENT > 1:1)			VERTICALLY	4.5 m	4.5 m	4.5 m	4.5 m	4.5 m	5.5m		
		CUTTINGS, EMBANKMENTS AND EASEMENT BOUNDARIES			HORIZONTALLY	1.5m	1.5m	2.1m	2.1m	1.5m	5.5m		
STRUCTURES / BUILDINGS	UNROOFED TERRACES, BALCONIES, SUN DECKS, PAVED AREAS ETC. THAT ARE SUBJECT TO PEDESTRIAN TRAFFIC ONLY		E	VERTICALLY (NOTE 1)	2.7m	3.7m	4.5m	3.7m	2.7m	5.0m			
			F	IN ANY OTHER DIRECTION	1.0m	1.5m	2.1m	1.5m	1.5m	3.0m			
	ROOFS OR SIMILAR STRUCTURE NOT NORMALLY ACCESSIBLE TO PERSONS, INCL. BLANK WALLS AND WINDOWS THAT CANNOT BE OPENED		G	VERTICALLY (NOTE 1)	2.0m	2.7m	3.7m	2.7m	2.7m	4.5m			
			H	IN ANY OTHER DIRECTION	1.0m	1.5m	2.1m	1.5m	1.5m	3.0m			
	COVERED PLACES SUCH AS VERANDAS, BALCONIES AND WINDOWS WHICH CAN BE OPENED		I	IN ANY DIRECTION	1.0m	1.5m	2.1m	1.5m	1.5m	3.0m			
	PARTS OF ANY STRUCTURE NOT NORMALLY ACCESSIBLE TO PERSONS, INCL. BLANK WALLS AND WINDOWS THAT CANNOT BE OPENED		K	VERTICALLY (NOTE 1)	0.6m	2.7m	3.7m	2.7m	2.7m	4.5m			
L			HORIZONTALLY	0.1m	0.6m	1.5m	0.6m	0.1m	2.5m				
OTHER HIGH-RISK SITUATIONS	SERVICE POLES IN THE VICINITY OF OH CONDUCTORS (REFER 10.2.4)			VERTICALLY	1.5m	1.5m	1.65m	1.65m	1.5m	3.0m			
				HORIZONTALLY	1.0m	2.0m	2.2m	1.5m	1.5m	3.0m			
	OVER DIMENSION HIGH LOAD TRANSPORT ROUTES			VERTICALLY	6.7m MINIMUM FOR ALL CONDUCTORS (INCL. STAY WIRES AND SERVICES)								
	TEMPORARY STRUCTURES INCLUDING SCAFFOLDING			VERTICALLY	NOT PERMITTED								
				HORIZONTALLY	1.0m	1.5m	2.1m	2.1m	2.1m	3.0m			
QUARRIES, MINES, FARMS ETC. WHERE ACTIVITIES WILL BE IN CLOSE PROXIMITY TO POWER LINES (NOTE 3)				SUBJECT TO RISK ASSESSMENT									
FARMS UTILISING IRRIGATION			VERTICALLY	5.5m	7.5m	7.5m	7.5m	7.5m	7.5m	7.5m			
			HORIZONTALLY	7.9m	7.9m	8.5m	8.5m	7.9m	13.0m				

SEE NOTES ON DRAWING D-OHC-P004-SD-002

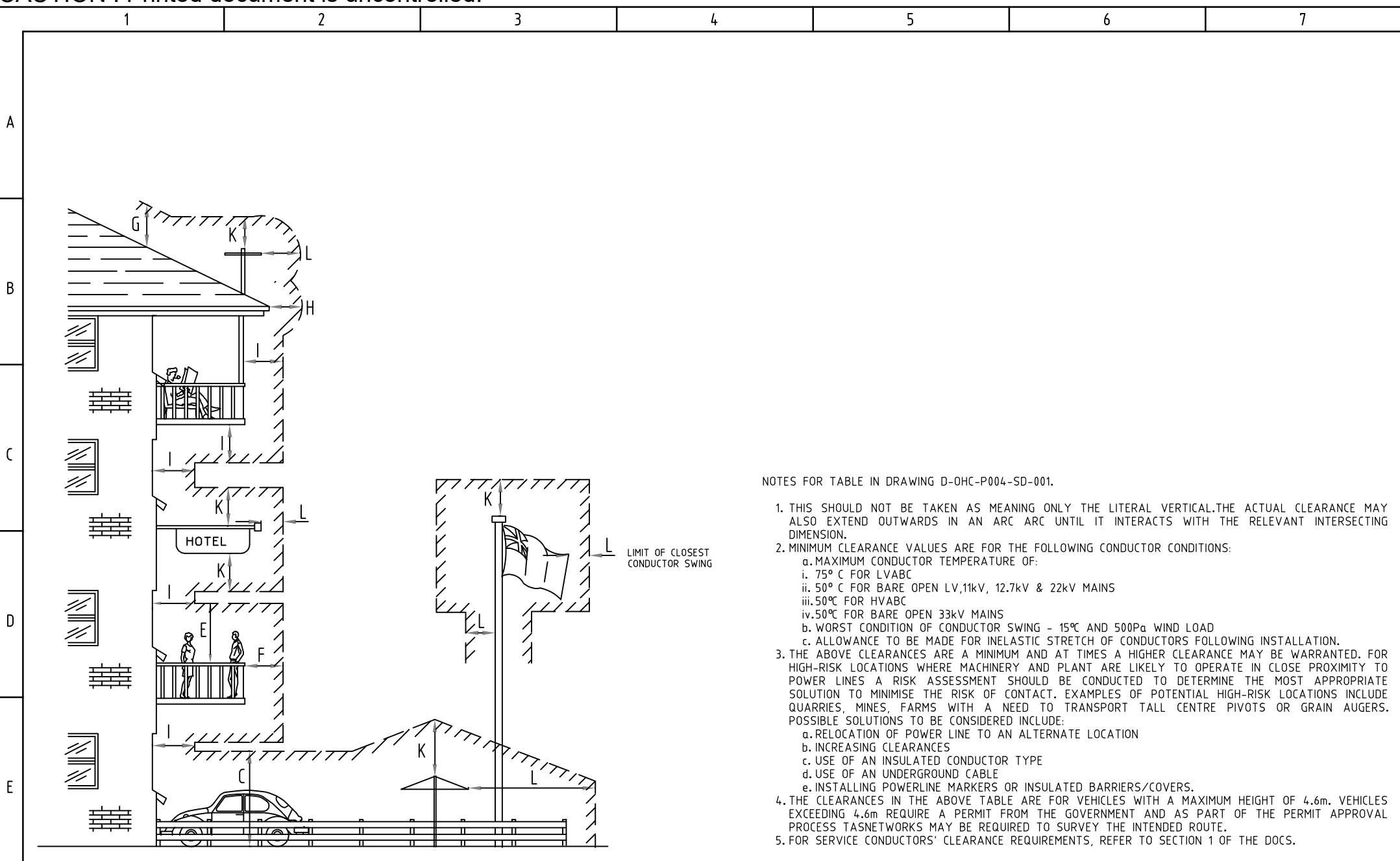
EMF/PDF CREATION DATE 08/05/2026

BM DWG NO D-OHC-P004-SD-001

BM REV A

ALTERNATIONS	ORIGINAL ISSUE	REFERENCE NEW DRAWING	 TasNetworks © Tasmanian Networks PTY. LTD. trading as TasNetworks ABN 24 167 957 299	TITLE CLEARANCES DISTRIBUTION MAINS CLEARANCES FROM GROUND AND STRUCTURES	SCALE NTS A4 REVISION A	
	DRAWN					ANSS
	DRAFTING CHECK					ANSS
	DESIGNED BY					T.JONZHIA
	CHECKED BY					B.WOLSKI
APPROVED BY	B.PAPALIA	D - OHC - P004 - SD - 001				
DATE APPROVED	22-06-2026					

EMF/PDF CREATION DATE 08/05/2026



NOTES FOR TABLE IN DRAWING D-OHC-P004-SD-001.

1. THIS SHOULD NOT BE TAKEN AS MEANING ONLY THE LITERAL VERTICAL. THE ACTUAL CLEARANCE MAY ALSO EXTEND OUTWARDS IN AN ARC UNTIL IT INTERACTS WITH THE RELEVANT INTERSECTING DIMENSION.
2. MINIMUM CLEARANCE VALUES ARE FOR THE FOLLOWING CONDUCTOR CONDITIONS:
 - a. MAXIMUM CONDUCTOR TEMPERATURE OF:
 - i. 75° C FOR LVABC
 - ii. 50° C FOR BARE OPEN LV, 11kV, 12.7kV & 22kV MAINS
 - iii. 50° C FOR HVABC
 - iv. 50° C FOR BARE OPEN 33kV MAINS
 - b. WORST CONDITION OF CONDUCTOR SWING - 15° AND 500Pa WIND LOAD
 - c. ALLOWANCE TO BE MADE FOR INELASTIC STRETCH OF CONDUCTORS FOLLOWING INSTALLATION.
3. THE ABOVE CLEARANCES ARE A MINIMUM AND AT TIMES A HIGHER CLEARANCE MAY BE WARRANTED. FOR HIGH-RISK LOCATIONS WHERE MACHINERY AND PLANT ARE LIKELY TO OPERATE IN CLOSE PROXIMITY TO POWER LINES A RISK ASSESSMENT SHOULD BE CONDUCTED TO DETERMINE THE MOST APPROPRIATE SOLUTION TO MINIMISE THE RISK OF CONTACT. EXAMPLES OF POTENTIAL HIGH-RISK LOCATIONS INCLUDE QUARRIES, MINES, FARMS WITH A NEED TO TRANSPORT TALL CENTRE PIVOTS OR GRAIN AUGERS. POSSIBLE SOLUTIONS TO BE CONSIDERED INCLUDE:
 - a. RELOCATION OF POWER LINE TO AN ALTERNATE LOCATION
 - b. INCREASING CLEARANCES
 - c. USE OF AN INSULATED CONDUCTOR TYPE
 - d. USE OF AN UNDERGROUND CABLE
 - e. INSTALLING POWERLINE MARKERS OR INSULATED BARRIERS/COVERS.
4. THE CLEARANCES IN THE ABOVE TABLE ARE FOR VEHICLES WITH A MAXIMUM HEIGHT OF 4.6m. VEHICLES EXCEEDING 4.6m REQUIRE A PERMIT FROM THE GOVERNMENT AND AS PART OF THE PERMIT APPROVAL PROCESS TASNETWORKS MAY BE REQUIRED TO SURVEY THE INTENDED ROUTE.
5. FOR SERVICE CONDUCTORS' CLEARANCE REQUIREMENTS, REFER TO SECTION 1 OF THE DOCS.

ALTERATIONS	ORIGINAL ISSUE

REFERENCE
NEW DRAWING

DRAWN	ANSS
DRAFTING CHECK	ANSS
DESIGNED BY	T.JONYZHA
CHECKED BY	B.WOLSKI
APPROVED BY	B.PAPALIA
DATE APPROVED	22-06-2024

© Tasmanian Networks PTY. LTD. trading as TasNetworks ABN: 24 167 957 299		NO PART OF THIS DRAWING MAY BE REPRODUCED, STORED IN A RETRIEVAL SYSTEM IN ANY FORM, OR TRANSMITTED BY ANY MEANS WITHOUT THE PRIOR PERMISSION OF TASNETWORKS	
TITLE	CLEARANCES DISTRIBUTION MAIN CLEARANCES FROM GROUND AND STRUCTURES NOTES	SCALE	NTS
			A4
	D - OHC - P004 - SD - 002	REVISION	A

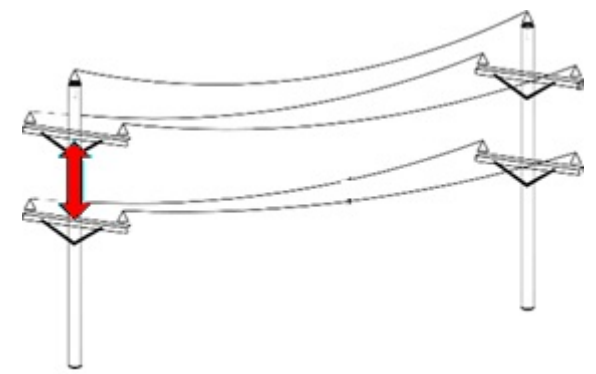
BM DWG NO D-OHC-P004-SD-002

BM REV A

		1	2	3	4	5	6	7	
A		UPPER CIRCUIT							
		HV >33kV ≤66kV	HV 1kV - 33kV		LV		OTHER		
		BARE CONDUCTOR	BARE AND COVERED CONDUCTOR, INSULATED WITHOUT EARTHED SCREEN	INSULATED WITH EARTHED SCREEN	BARE AND COVERED CONDUCTOR	LVABC	CONDUCTIVE E.G. PILOT CABLE	NON-CONDUCTIVE E.G. ADSS	
B	LOWER CIRCUIT	HV: 33kV > U ≤ 66kV	BARE CONDUCTOR	1.5m					
		HV: 1kV - 33kV	BARE AND COVERED CONDUCTOR, INSULATED WITHOUT EARTHED SCREEN	1.5m	0.92m	0.92m			
			INSULATED WITH EARTHED SCREEN	1.5m	0.92m	0.2m			
		LV	BARE AND COVERED CONDUCTOR	1.8m	1.38m	1.38m	0.3m		
			LVABC	1.8m	1.38m	1.38m	0.3m	0.3m	
		OTHER	CONDUCTIVE E.G. PILOT CABLE	2.0m	2.0m	2.0m	0.3m	0.3m	0.3m
NON-CONDUCTIVE E.G. ADSS	2.0m		2.0m	2.0m	0.3m	0.3m	0.3m	0.2m	

NOTES:

- THE CLEARANCES LISTED ARE DISTANCE BETWEEN KINGBOLTS OF UPPER AND LOWER CIRCUIT CONSTRUCTIONS. CONSIDERATION SHOULD BE GIVEN TO INCREASING CLEARANCES WHEN DESIGNING AT CLEARANCE LIMITS IN SITUATIONS WHERE THERE IS A HEIGHT LOSS ON THE TOP CIRCUIT AND/OR A HEIGHT GAIN ON THE LOWER CIRCUIT, E.G. A STRAIN CONSTRUCTION OR SUSPENSION CONSTRUCTION ABOVE AND A PIN CONSTRUCTION BELOW
- THE CLEARANCES MAY NEED TO BE INCREASED TO ACCOUNT FOR SAFE APPROACH DISTANCES REQUIRED FOR CONSTRUCTION, OPERATION OR MAINTENANCE ACTIVITIES.
- THIS IS A MINIMUM CLEARANCE FOR LIVE LINE WORK PRACTICE. THIS DIMENSION MAY BE REDUCED TO AN ABSOLUTE MINIMUM OF 1.2m VIA CONSULTATION WITH TASNETWORKS ON A CASE-BY-CASE BASIS.



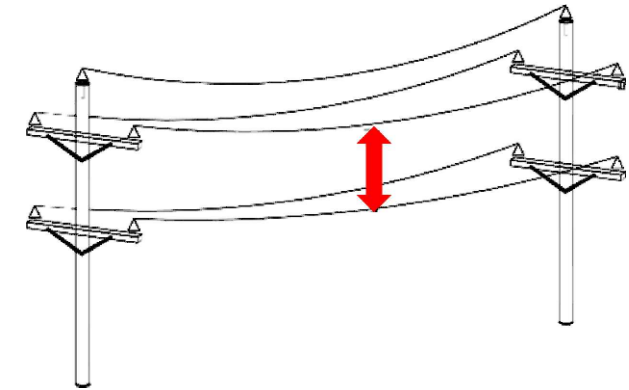
ALTERNATIONS	ORIGINAL ISSUE	REFERENCE			© Tasmanian Networks PTY. LTD. trading as TasNetworks ABN: 24 167 957 299	NO PART OF THIS DRAWING MAY BE REPRODUCED, STORED IN A RETRIEVAL SYSTEM IN ANY FORM, OR TRANSMITTED BY ANY MEANS WITHOUT THE PRIOR PERMISSION OF TASNETWORKS	SCALE
		NEW DRAWING					TITLE CLEARANCES INTERCIRCUIT CLEARANCES MINIMUM SPACING BETWEEN CIRCUITS AT A POLE
				DRAWN: ANSS DRAFTING CHECK: ANSS DESIGNED BY: T.JONZHRA CHECKED BY: B.WOLSKI APPROVED BY: B.PAPALIA DATE APPROVED: 22-06-2026			A4 REVISION A

EMF/PDF CREATION DATE 08/05/2026

BM DWG NO D-OHC-P005-SD-001

BM REV A

		1	2	3	4	5	6	7	
A				UPPER CIRCUIT					
				HV 1kV - 33kV		LV		OTHER	
				BARE OR COVERED CONDUCTOR, INSULATED WITHOUT EARTHED SCREEN	INSULATED WITH EARTHED SCREEN	BARE AND COVERED CONDUCTOR	LVABC	CONDUCTIVE E.G. PILOT CABLE	NON-CONDUCTIVE E.G. ADSS
B	LOWER CIRCUIT	HV: 1kV - 33kV	BARE AND COVERED CONDUCTOR, INSULATED WITHOUT EARTHED SCREEN	0.5m					
			INSULATED WITH EARTHED SCREEN	0.5m	0.3m				
C	LV		BARE AND COVERED CONDUCTOR	0.5m	0.38m	0.38m			
			LVABC	0.5m	0.38m	0.3m	0.3m		
	OTHER	CONDUCTIVE E.G. PILOT CABLE	0.5m	0.38m	0.38m	0.3m	0.3m	0.2m	
		NON-CONDUCTIVE E.G. ADSS	1.2m	1.2m	0.3m	0.3m	0.3m	0.2m	



NOTES:

1. THE CLEARANCES MAY NEED TO BE INCREASED TO ACCOUNT FOR SAFE APPROACH DISTANCES REQUIRED FOR CONSTRUCTION, OPERATION OR MAINTENANCE ACTIVITIES.
2. THE CLEARANCES ARE BASED ON THE UPPER CIRCUIT BEING AT MAXIMUM OPERATING TEMPERATURE, AND THE LOWER CIRCUIT AT 5°C.
3. MID SPAN CLEARANCES MAY NEED TO BE INCREASED IN SITUATIONS WHERE THE CIRCUIT TRANSITIONS FROM HORIZONTAL TO VERTICAL ORIENTATION.
4. CONSIDERATION SHOULD BE GIVEN TO LOCAL FACTORS THAT MAY ADVERSELY AFFECT IN-SPAN CLEARANCES INCLUDING BIRD STRIKE, AIRCRAFT WARNING DEVICES, ICE LOADING, USE OF IRRIGATORS ETC.

ALTERNATIONS	ORIGINAL ISSUE	REFERENCE			© Tasmanian Networks PTY. LTD. trading as TasNetworks ABN 24 167 957 299	NO PART OF THIS DRAWING MAY BE REPRODUCED, STORED IN A RETRIEVAL SYSTEM IN ANY FORM, OR TRANSMITTED BY ANY MEANS WITHOUT THE PRIOR PERMISSION OF TASNETWORKS	SCALE
		NEW DRAWING					TITLE CLEARANCES INTERCIRCUIT CLEARANCES MINIMUM IN-SPAN SPACING BETWEEN CIRCUITS ON COMMON POLES
				DRAWN: ANSS DRAFTING CHECK: ANSS DESIGNED BY: T.KONZAKA CHECKED BY: B.WOLSKI APPROVED BY: B.PAPALIA DATE APPROVED: 22-06-2024			A4
							REVISION
							A

1 2 3 4 5 6 7

A

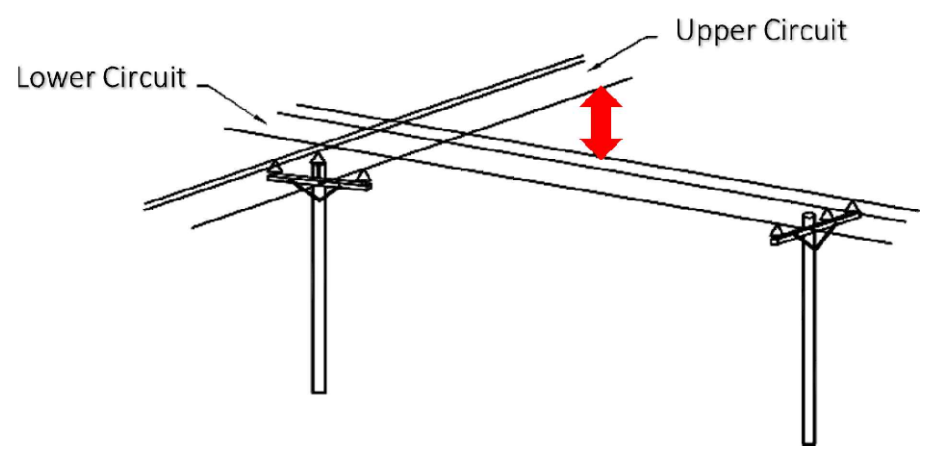
B

C

D

E

			UPPER CIRCUIT					
			HV >33kV ≤66kV	HV 1kV - 33kV		LV	OTHER	
			BARE CONDUCTOR	BARE AND COVERED CONDUCTOR, INSULATED WITHOUT EARTHED SCREEN	INSULATED WITH EARTHED SCREEN	BARE AND COVERED CONDUCTOR	CONDUCTIVE E.G. PILOT CABLE	NON-CONDUCTIVE E.G. ADSS
LOWER CIRCUIT	HV: 33kV > U ≤ 66kV	BARE CONDUCTOR	1.8m					
	HV: 1kV - 33kV	BARE AND COVERED CONDUCTOR, INSULATED WITHOUT EARTHED SCREEN	1.8m	1.2m				
		INSULATED WITH EARTHED SCREEN	1.8m	1.2m	0.6m			
	LV	BARE AND COVERED CONDUCTOR	1.8m	1.2m	0.6m	0.6m		
	OTHER	CONDUCTIVE E.G. PILOT CABLE	1.8m	1.2m	0.6m	0.6m	0.6m	0.4m
NON-CONDUCTIVE E.G. ADSS		1.8m	1.2m	1.2m	0.6m	0.3m	0.3m	



NOTES:

1. THE CLEARANCES MAY NEED TO BE INCREASED TO ACCOUNT FOR BLOWOUT ON LARGE SPANS OR SAFE APPROACH DISTANCES REQUIRED FOR CONSTRUCTION, OPERATION OR MAINTENANCE ACTIVITIES.
2. THE CLEARANCES ARE BASED ON THE UPPER CIRCUIT BEING AT MAXIMUM OPERATING TEMPERATURE AND THE LOWER CIRCUIT AT 5°C.
3. IN-SPAN CLEARANCES MAY NEED TO BE INCREASED IN SITUATIONS WHERE THE CIRCUIT TRANSITIONS FROM HORIZONTAL TO VERTICAL ORIENTATIONS.
4. CONSIDERATION SHOULD BE GIVEN TO LOCAL FACTORS THAT MAY ADVERSELY AFFECT IN-SPAN CLEARANCES INCLUDING BIRD STRIKE, AIRCRAFT WARNING DEVICES, ICE LOADING, USE OF IRRIGATORS ETC.

EMF/PDF CREATION DATE 08/05/2026

ALTERNATIONS ORIGINAL ISSUE

ORIGINAL ISSUE	REFERENCE		© Tasmanian Networks PTY. LTD. trading as TasNetworks ABN 24 167 957 299	NO PART OF THIS DRAWING MAY BE REPRODUCED, STORED IN A RETRIEVAL SYSTEM IN ANY FORM, OR TRANSMITTED BY ANY MEANS WITHOUT THE PRIOR PERMISSION OF TASNWORKS
	NEW DRAWING			

DRAWN	ANSS
DRAFTING CHECK	ANSS
DESIGNED BY	T.XINYIHA
CHECKED BY	B.WOLSKI
APPROVED BY	B.PAPALIA
DATE APPROVED	22-06-2024

D - OHC - P005 - SD - 003	
---------------------------	--

DWG STATUS STANDARD

BM DWG NO D-OHC-P005-SD-003

BM REV A

1 2 3 4 5 6 7

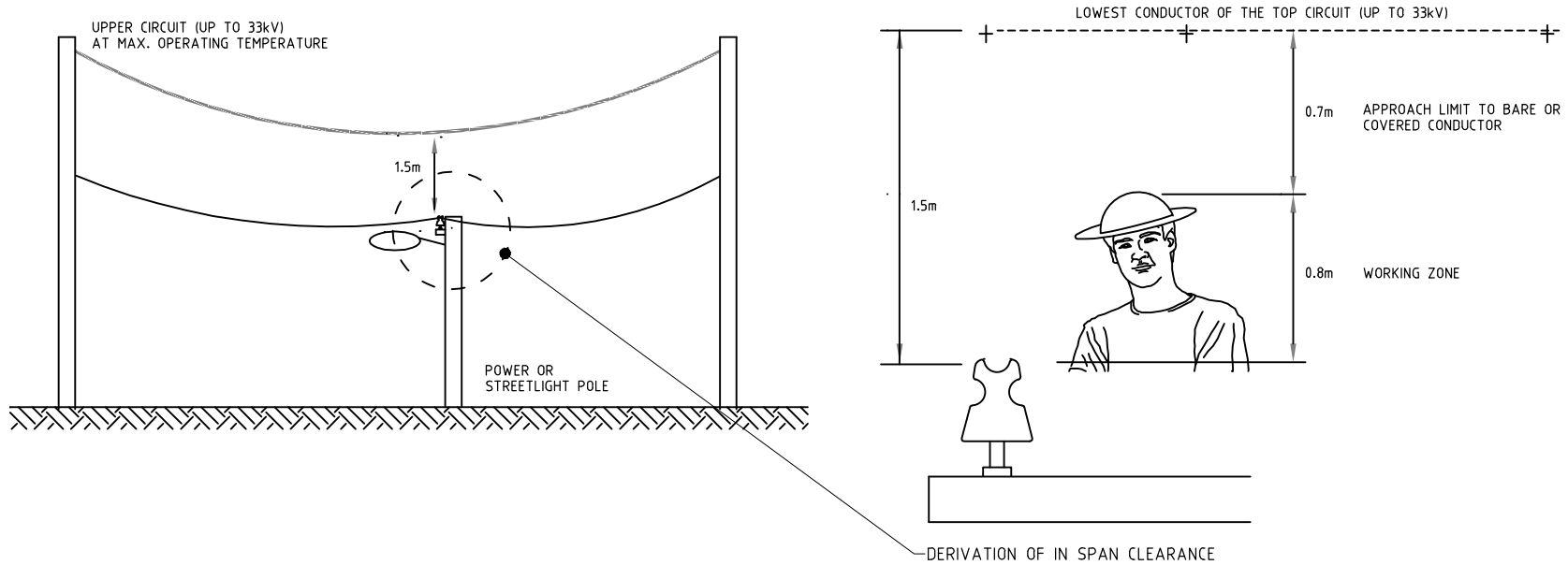
A

B

C

D

F



EMF/PDF CREATION DATE 08/05/2026

ALTERATIONS

ORIGINAL ISSUE

REFERENCE	
NEW DRAWING	

DRAWN	ANSS
DRAFTING CHECK	ANSS
DESIGNED BY	T.KINZHIRA
CHECKED BY	B.WOLSKI
APPROVED BY	B.PAPALIA
DATE APPROVED	22-06-2026

© Tasmanian Networks PTY. LTD. trading as TasNetworks ABN 24 167 957 299		NO PART OF THIS DRAWING MAY BE REPRODUCED, STORED IN A RETRIEVAL SYSTEM IN ANY FORM, OR TRANSMITTED BY ANY MEANS WITHOUT THE PRIOR PERMISSION OF TASNETWORKS	
TITLE CLEARANCES INTERCIRCUIT CLEARANCES MINIMUM SPACING FROM INTER-SPAN POLES		SCALE NTS	A4
D - OHC - P005 - SD - 004		REVISION A	

DWG STATUS STANDARD

BM DWG NO D-OHC-P005-SD-004

BM REV A

1 2 3 4 5 6 7

ADSS AND MAIN FIBRE OPTIC CABLE CLEARANCES FROM POLE-MOUNTED PLANTS

FOC PIT AND FDH CABINET CLEARANCES FROM TASNETWORKS POLES

A

COMPONENT	ELEMENT	MIN. CLEARANCE
TRANSFORMER	HV MAINS	2.0m
	TOP OF HV BUSHINGS	0.7m
	TANK	0.2m
	LV MAINS	0.3m
RECLOSER	TOP OF HV BUSHINGS	2.0m
	TANK	0.2m
CAPACITOR	TOP OF HV BUSHINGS	2.0m
	TANK	0.2m
VOLTAGE REGULATOR		NOT PERMITTED ON POLE
AIR BREAK SWITCH		2.0m
HV LINKS OR FUSES	LOWEST POINT OF FUSE/LINK SWING	1.8m
LV LINKS OR FUSES, INCL. SERVICE FUSES		0.8m
HV CABLE TERMINATION	POINT WHERE PHASE CORES SEPARATE	1.2m
LV CABLE TERMINATION	POINT WHERE PHASE CORES SEPARATE	0.3m
STREET LIGHT BRACKET		0.23m
STAY WIRES		0.15m

POLE TYPE	CLEARANCES FOR SPLICE PITS AND FDH FROM POLES WITH HV CONDUCTORS OR APPARATUS	CLEARANCES FOR SPLICE PITS AND FDH FROM POLES WITH LV CONDUCTORS OR APPARATUS	CLEARANCES FOR HAULAGE PITS FROM HV & LV POLES
CONDUCTIVE POLES (STEEL/CONC)	15m	3m	3m
TIMBER POLES WITH HV EARTH ATTACHED	15m	3m	3m
ALL OTHER WOOD POLES	3m	3m	3m

B

C

ADSS AND MAIN FIBRE OPTIC CABLE CLEARANCES FROM GROUND


LOCATION DESCRIPTION	MIN. CLEARANCE
ROADS, FREEWAYS	5.5m ¹
DESIGNATED HIGH LOAD HIGHWAYS, FREEWAYS AND TRUCK REFUELLING DEPOTS	6.0m ¹
PRIVATE OR PUBLIC LAND PARCELS THAT VEHICLES OR MACHINERY MAY TRAVERSE (INCLUDING COMMERCIAL PROPERTY, FARMLAND AND PADDOCKS)	5.5m
COMMERCIAL, FARMLAND OR DESIGNATED Paddock DRIVEWAYS (INCLUDING RESIDENTIAL ACCESS TO FARM PROPERTIES)	5.5m
RESIDENTIAL DRIVEWAYS	4.6m
OTHER LAND NOT NORMALLY ACCESSIBLE TO VEHICLES	4.5m
NAVIGABLE WATERWAYS OR RIVER ⁴	12.0m
RAILWAY LINE ⁵	5.5m

NOTES:

- FOR NBN SERVICE DROP CABLES, REFER TASNETWORKS TS-02 DOCUMENT.
- ALL CLEARANCES ARE BASED ON FOC TEMPERATURE OF 30°C.
- FOR ROADWAY VERGE THE MINIMUM REQUIREMENT MAY BE REDUCED TO 4.6m WHERE VEHICLES CANNOT TRAVERSE.
- NAVIGABLE WATERWAY TO BE MEASURED AT HIGHEST ASTRONOMICAL TIDE FOR TIDAL WATERWAYS OR FULL CAPACITY FOR A DAM OR LAKE.
- RAILWAY CROSSINGS ARE TO BE CONSTRUCTED WITH A WEAK LINK ATTACHMENT TO THE POLES ON EITHER SIDE OF THE CROSSING.

EMF/PDF CREATION DATE 08/05/2026

ALTERATIONS ORIGINAL ISSUE

ORIGINAL ISSUE	REFERENCE	 TasNetworks	© Tasmanian Networks PTY. LTD. trading as TasNetworks ABN: 24 167 957 299	NO PART OF THIS DRAWING MAY BE REPRODUCED, STORED IN A RETRIEVAL SYSTEM IN ANY FORM, OR TRANSMITTED BY ANY MEANS WITHOUT THE PRIOR PERMISSION OF TASNETWORKS
	NEW DRAWING		TITLE	SCALE
			CLEARANCES FROM TELECOMMUNICATIONS INFRASTRUCTURE ADSS / FOC	NTS
				A4
				REVISION
				A

BM DWG NO D-OHC-P006-SD-001

BM REV A

D - OHC - P006 - SD - 001

A

MINIMUM CLEARANCES FROM PSTN (TELEPHONE) CABLES ON TASNETWORKS POLES

DISTRIBUTION NETWORK COMPONENT	ON POLE	IN SPAN
BARE HV MAINS >33kV MAINS	3.0m	2.4m
BARE OR COVERED HV MAINS ≤33kV MAINS	2.4m	1.8m
NMSHVABC MAINS	1.2m	1.2m
MSHVABC (METALLIC EARTHED SCREEN) MAINS	0.6m	1.2m
BARE LV OR SL MAINS	1.2m	1.2m
LVABC MAINS	0.6m	1.2m
STREETLIGHT LEADS, BRACKETS OR FITTINGS	0.05m	0.15m
STAY FITTINGS	0.05m	0.15m
EARTH DOWNLEADS	0.05m	

B

TELSTRA POLES

MINIMUM 1.2m CLEARANCE BETWEEN TASNETWORKS SERVICES AND TELSTRA CABLES/EQUIPMENT.

C

MINIMUM CLEARANCES BETWEEN EARTHING AND TELECOMMUNICATIONS PLANT

POWER SYSTEM EARTH TYPE	PITS, PILLARS, CABINETS, PAYPHONES	EXCHANGE EQUIPMENT
LV	0.3m	1m
HV EARTH	SEPARATE	15m
	CMEN	2m
SWER DISTRIBUTION TRANSFORMER	15m	30m
SWER ISOLATING TRANSFORMER	25m	50m

D

NOTE:

MINIMUM CLEARANCES TO BE MAINTAINED BETWEEN TASNETWORKS EARTHS (INCLUDING CONDUCTIVE POLES) AND TELECOMMUNICATIONS INFRASTRUCTURE (PITS, PILLARS, GROUND-MOUNTED PLANT) ARE AS SHOWN ABOVE.

E

EMF/PDF CREATION DATE 08/05/2026

ALTERATIONS ORIGINAL ISSUE

REFERENCE	
NEW DRAWING	

	
DRAWN	ANSS
DRAFTING CHECK	ANSS
DESIGNED BY	T.KOZYRKA
CHECKED BY	B.WOLSKI
APPROVED BY	B.PAPALIA
DATE APPROVED	22-06-2026

© Tasmanian Networks PTY. LTD. trading as TasNetworks ABN 24 167 957 299		NO PART OF THIS DRAWING MAY BE REPRODUCED, STORED IN A RETRIEVAL SYSTEM IN ANY FORM, OR TRANSMITTED BY ANY MEANS WITHOUT THE PRIOR PERMISSION OF TASNETWORKS	
TITLE CLEARANCES FROM TELECOMMUNICATIONS INFRASTRUCTURE PSTN & TASNETWORKS EARTHS		SCALE NTS	REVISION A
D - OHC - P006 - SD - 002		A4	

BM DWG NO D-OHC-P006-SD-002

BM REV A

1

2

3

4

5

6

7

GROUND CLEARANCE FOR AERIAL STAY WIRES

SITUATION	REQUIRED MIN. CLEARANCE
OVER CARRIAGEWAY	5.5m
OVER PRIVATE DRIVEWAYS	4.6m
OTHER LOCATIONS	3.0m

CLEARANCE FROM MAINS TO STAY WIRES

MAINS TYPE	REQUIRED MIN. CLEARANCE
ADSS	0.15m
LV BARE NEUTRAL, LVABC	0.15m
LV BARE MAINS ACTIVE	0.23m
HV BARE OR COVERED MAINS	0.46m
HVABC	0.15m
OPERATING PLATFORMS	2.6m VERTICALLY

A

B

C

D


E

EMF/PDF CREATION DATE 08/05/2026

ALTERATIONS

ORIGINAL ISSUE

REFERENCE	
NEW DRAWING	

 TasNetworks	
DRAWN	ANSS
DRAFTING CHECK	ANSS
DESIGNED BY	T.KNYZHKA
CHECKED BY	B.WOLSKI
APPROVED BY	B.PAPALIA
DATE APPROVED	22-06-2026

© Tasmanian Networks PTY. LTD. trading as TasNetworks ABN: 24 167 357 299		NO PART OF THIS DRAWING MAY BE REPRODUCED, STORED IN A RETRIEVAL SYSTEM IN ANY FORM, OR TRANSMITTED BY ANY MEANS WITHOUT THE PRIOR PERMISSION OF TASNETWORKS	
TITLE CLEARANCES CLEARANCES FROM STAY WIRES GROUND CLEARANCE & CLEARANCE FROM MAINS		SCALE NTS A4	REVISION A
D - OHC - P007 - SD - 001			

A

CLEARANCE FROM PUBLIC LIGHTING BRACKETS MOUNTED ON A DISTRIBUTION POLE

MAINS TYPE	REQUIRED MIN. CLEARANCE
ADSS	0.23m
LV BARE NEUTRAL, LVABC	0.3m
LV BARE MAINS ACTIVE	0.6m
HV BARE OR COVERED MAINS	1.2m
HVABC	0.3m

B

CLEARANCE FROM FREE-STANDING NON-FRANGIBLE PUBLIC LIGHTING POLES

MAINS TYPE	REQUIRED MIN. CLEARANCE
ADSS	0.1m IN ANY DIRECTION
LV BARE NEUTRAL, LVABC, INSULATED SERVICE	0.6m VERTICALLY 0.3m HORIZONTALLY
LV BARE MAINS ACTIVE	1.5m VERTICALLY 0.6m HORIZONTALLY
HV BARE OR COVERED MAINS	1.5m VERTICALLY 1.5m HORIZONTALLY
HVABC	1.5m VERTICALLY 0.3m HORIZONTALLY

C

CLEARANCE FROM FREE-STANDING FRANGIBLE PUBLIC LIGHTING POLES

SITUATION	REQUIRED MIN. CLEARANCE
POTENTIAL IMPACT TO THE STREETLIGHT POLE WOULD RESULT IN THE POLE FALLING CLEAR OF THE OVERHEAD CONDUCTORS. NOTE	0.6 X SL MOUNTING HEIGHT
POTENTIAL IMPACT TO THE STREETLIGHT POLE WOULD RESULT IN THE POLE FALLING TOWARD THE OVERHEAD CONDUCTORS. NOTE	1.2 X SL MOUNTING HEIGHT

D

NOTE:
FRANGIBLE POLES ARE NOT TO BE USED IN AREAS OF HIGH PEDESTRIAN VOLUME (E.G. NEAR SCHOOLS, BUS STOPS, SHOPPING CENTRES).

E

EMF/PDF CREATION DATE 08/05/2026

ALTERATIONS ORIGINAL ISSUE

REFERENCE
NEW DRAWING

 TasNetworks	
DRAWN	ANSS
DRAFTING CHECK	ANSS
DESIGNED BY	T.KNYZHKA
CHECKED BY	B.WOLSKI
APPROVED BY	B.PAPALIA
DATE APPROVED	22-06-2026

© Tasmanian Networks PTY. LTD. trading as TasNetworks ABN: 24 167 957 299		NO PART OF THIS DRAWING MAY BE REPRODUCED, STORED IN A RETRIEVAL SYSTEM IN ANY FORM, OR TRANSMITTED BY ANY MEANS WITHOUT THE PRIOR PERMISSION OF TASNETWORKS	
TITLE CLEARANCES CLEARANCES FROM PUBLIC LIGHTING INFRASTRUCTURE		SCALE NTS	REVISION A
D - OHC - P008 - SD - 001		A4	