



# Distribution Overhead Construction Standard

## Section 8 Stays

Record Number: R0002730487

Version Number: 2.0

Date: June 2026

---

## Authorisations

Action	Name and title	Date
Prepared by	Tetiana Knyzhka	10/06/2026
Reviewed by	Branden Papalia	22/06/2026
Authorised by	Branden Papalia	22/06/2026
Review cycle	5 Years	

## Responsibilities

This document is the responsibility of the Asset Management Systems and Standards Team, Tasmanian Networks Pty Ltd, ABN 24 167 357 299 (hereafter referred to as "TasNetworks").

Please contact the Asset Management Systems and Standards Team with any queries related to this standard.

---

## Record of revisions

Version	Description	Date
2.0	Major update: Section fully revised to reflect current construction requirements.	17/06/2026

D-OHC-H100-SD-001	STAYS. ASSEMBLIES EXPLANATION
D-OHC-H100-SD-002	STAYS. GENERAL NOTES & CODES
D-OHC-H100-SD-003	STAYS. GENERAL NOTES. STAY ANGLE TABLE
D-OHC-H101-SD-001	STAYS. SUB-ASSEMBLIES. POLE ATTACHMENTS
D-OHC-H101-SD-002	STAYS. SUB-ASSEMBLIES. INSULATORS, STAY WIRE & STAY WIRE
D-OHC-H101-SD-003	STAYS. SUB-ASSEMBLIES. SCREW ANCHORS
D-OHC-H101-SD-004	STAYS. SUB-ASSEMBLIES. BLOCK AND ROCK ANCHORS
D-OHC-H102-SD-001	STAYS. SCREW IN TYPE. INSTALLATION DIMENSIONS. GENERAL ARRANGEMENT. HV & LV
D-OHC-H103-SD-001	STAYS. ROCK BOLT TYPE. INSTALLATION DIMENSIONS. GENERAL ARRANGEMENT. HV & LV
D-OHC-H104-SD-001	STAYS. BLOCK TYPE. INSTALLATION DIMENSIONS. GENERAL ARRANGEMENT. HV & LV
D-OHC-H105-SD-001	STAYS. VERTICAL STAY ARRANGMENT. INSTALLATION DIMENSIONS. GENERAL ARRANGEMENT. HV & LV
D-OHC-H105-SD-002	STAYS. VERTICAL STAY ARRANGMENT. BILL OF MATERIALS & TABLE
D-OHC-H106-SD-001	STAYS. AERIAL STAY. INSTALLATION DIMENSIONS. GENERAL ARRANGEMENT. HV & LV
D-OHC-H106-SD-002	STAYS. AERIAL STAY TO VERTICAL STAY. INSULATOR REQUIREMENTS & CLEARANCES
D-OHC-H107-SD-001	STAYS. CATTLE / HORSE GUARD. GENERAL ARRANGEMENT
	LIST OF BOMs

1 2 3 4 5 6 7

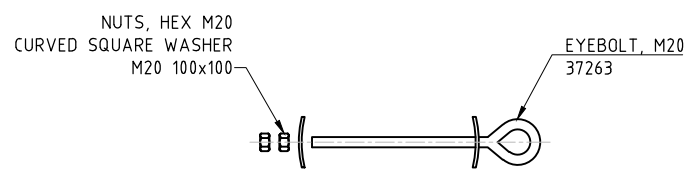
A

B

C

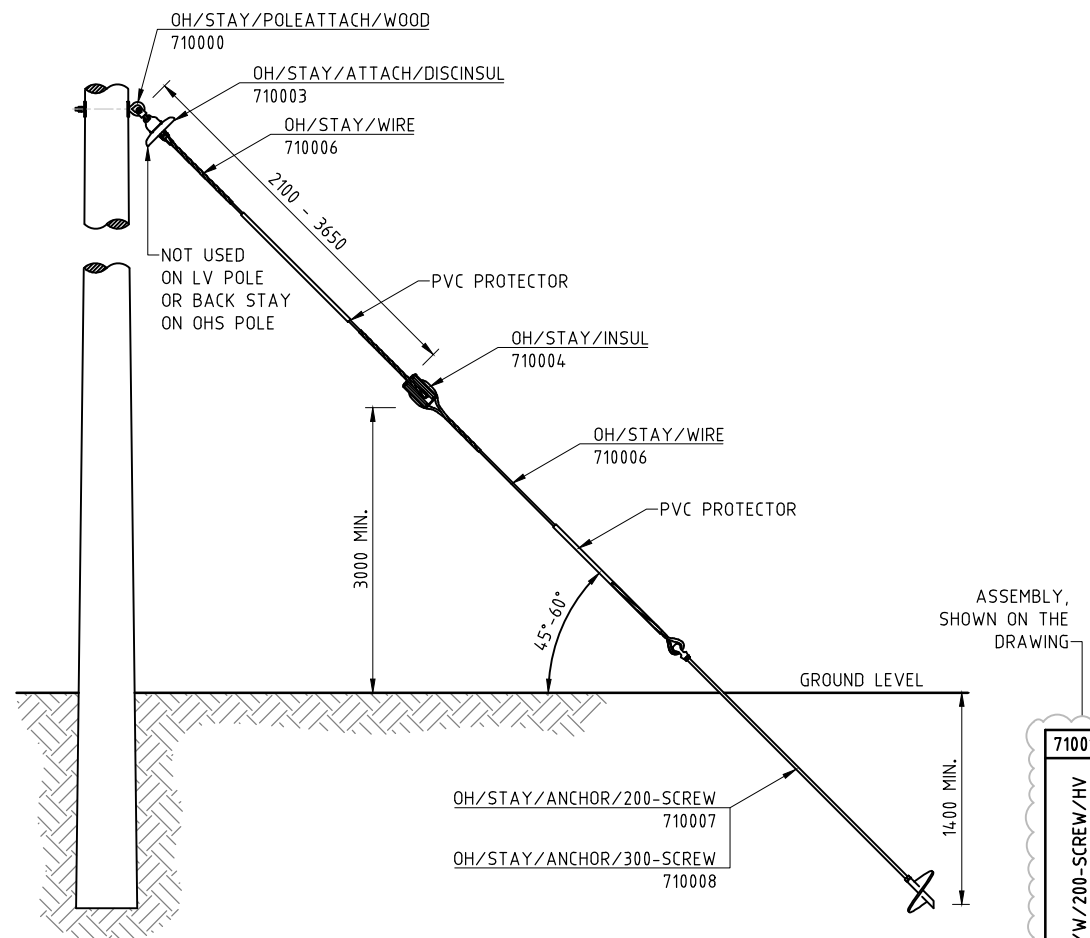
D

E



**SUB-ASSEMBLY**  
710000

MATERIAL	SAP ASSEMBLY DESCRIPTION	710000
37263	EYE BOLT, FORGED M20x350mm GAL C/W NUT	OH/STAY/POLEATTACH/WOOD 1



**ASSEMBLY**  
710012

MATERIAL	DESCRIPTION	710012
710007	OH/STAY/ANCHOR/200-SCREW	1
710008	OH/STAY/ANCHOR/300-SCREW	1

**NOTES:**

1. A MATERIAL IS TYPICALLY BOLTS, NUTS, WASHERS ETC. THAT IS PART OF A SUB-ASSEMBLY OR ASSEMBLY. IT'S DEFINED SEPARATELY TO SIMPLIFY DESIGN AND CONSTRUCTION.
2. A SUB-ASSEMBLY IS A SMALLER, SELF-CONTAINED UNIT THAT IS PART OF A LARGER ASSEMBLY. IT'S DEFINED SEPARATELY TO SIMPLIFY DESIGN AND CONSTRUCTION.
3. AN ASSEMBLY IS THE MAJOR STRUCTURE THAT IS MADE UP OF MULTIPLE PARTS OR SUB-ASSEMBLIES AND MATERIAL. IT REPRESENTS THE COMPLETE UNIT THAT IS INSTALLED IN THE FIELD.
4. MATERIAL NUMBERS TYPICALLY START WITH 1XXXXX, 2XXXXX, 3XXXXX, 4XXXXX, 5XXXXX, 8XXXXX, OR 0XXXXX (LEADING ZERO IS OFTEN NOT SHOWN).
5. SUB-ASSEMBLY DESCRIPTIONS BEGIN WITH "OH/" AND ARE ASSOCIATED WITH 710XXX NUMBERS.
6. ASSEMBLY DESCRIPTIONS BEGIN WITH "STAY", AND ALSO USE 710XXX NUMBERS.

MATERIAL	DESCRIPTION	710012
710000	OH/STAY/POLEATTACH/WOOD	1
710003	OH/STAY/ATTACH/DISCINSUL	1
710004	OH/STAY/INSUL	1
710006	OH/STAY/WIRE	2
710007	OH/STAY/ANCHOR/200-SCREW	1

EMF/PDF CREATION DATE 17/06/2026

BM DWG NO D-OHC-H100-SD-001

BM REV A

ALTERATIONS	ORIGINAL ISSUE	

REFERENCE	
NEW DRAWING	

DRAWN	MEGARAR PTY LTD
DRAFTING CHECK	MEGARAR PTY LTD
DESIGNED BY	T.XINYI
CHECKED BY	B.PAPALIA
APPROVED BY	B.PAPALIA
DATE APPROVED	17-06-2026

© Tasmanian Networks PTY. LTD. trading as TasNetworks ABN 24 167 357 299	NO PART OF THIS DRAWING MAY BE REPRODUCED, STORED IN A RETRIEVAL SYSTEM IN ANY FORM, OR TRANSMITTED BY ANY MEANS WITHOUT THE PRIOR PERMISSION OF TASNETWORKS
TITLE	STAYS ASSEMBLIES EXPLANATION
SCALE	NTS
	A4
REVISION	A
D - OHC - H100 - SD - 001	

1 2 3 4 5 6 7

# STAYS CONSTRUCTION CODES

FOR SUB-ASSEMBLIES:

OH

DENOTER

STAY

STAY

STAY - STAY SUB-ASSEMBLY

WIRE

SUB ASS. TYPE

POLEATTACH - MATERIALS TO ATTACH STAY TO POLE  
 WIRE - STAY WIRE MATERIALS  
 STRUT - STAY WIRE MATERIALS  
 INSUL - STAY INSULATORS  
 DISCINSUL - HV POLE DISC INSULATOR  
 ANCHOR - ANCHOR  
 CLEVIS - CLEVIS JOINT

WOOD

SUB TYPE MATERIAL

WOOD - WOOD POLE  
 TITAN - TITAN POLE  
 STOBSSF - STOBIE STEEL FACE  
 STOBCHF - STOBIE CONCRETE FACE  
 VERT - VERTICAL STAY  
 200-SCREW - SCREW ANCHOR 200mm  
 300-SCREW - SCREW ANCHOR 300mm  
 RB600 - ROCK BOLT 600mm  
 BLOCK - CONCRETE BLOCK

FOR ASSEMBLIES:

STAY

ASSEMBLY TYPE

STAY - STAY

G

CONSTRUCTION TYPE

G - GROUND STAY  
 V - VERTICAL STAY  
 A - AERIAL

W

POLE TYPE

W - WOOD  
 T - TITAN  
 STSF - STOBIE STEEL FACE  
 STCF - STOBIE CONCRETE FACE

RB

ANCHOR TYPE

200-SCREW - 200mm SCREW ANCHOR  
 300-SCREW - 300mm SCREW ANCHOR  
 RB - ROCK BOLT  
 B - BLOCK ANCHOR

HV

VOLTAGE TYPE

HV - HIGH VOLTAGE  
 LV - LOW VOLTAGE

GENERAL NOTES FOR STAY CONSTRUCTIONS:


1. MINIMUM CLEARANCES TO BE MAINTAINED IN ANY DIRECTION BETWEEN STAYWIRES AND OTHER CONDUCTORS ARE:
  - TO LV CONDUCTORS: 230mm (ACTIVE), 150mm (NEUTRAL).
  - TO 11kv OR 22kv CONDUCTORS: 460mm.
  - FOR ALL OTHER MINIMUM CLEARANCES OR AERIAL STAYWIRES REFER TO THE CLEARANCE SECTION.
2. STAYS SHALL NOT BE INSTALLED AT AN ANGLE GREATER THAN 60° WITHOUT A VERTICAL STAY STRUT. WHERE THE REQUIRED STAY ANGLE CANNOT BE ACHIEVED, THE STAY ATTACHMENT POINT MAY BE LOWERED BY A MAXIMUM OF 1.0m WITHOUT ENGINEERING APPROVAL. ANY REDUCTION GREATER THAN 1.0m SHALL REQUIRE DESIGN REVIEW OR ENGINEERING APPROVAL.
3. RAKE OF STAYPOLE AND POLE BEING STAYED, TO BE APPROXIMATELY HALF POLE HEAD DIAMETER BEFORE TENSIONING UP.
4. EYEBOLTS TO BE INSTALLED WITH EYE HARD ON WASHER AND AT LEAST 1 FULL THREAD PROTRUDING THROUGH NUT OR EYE NUT.
5. WHERE NECESSARY FOR HV POLES THE DISTANCE OF 3650mm IS TO BE INCREASED TO ENSURE THAT THE SECTION OF STAYWIRE BELOW THE STAY INSULATOR WILL NOT MAKE CONTACT WITH BARE HV OR LV CONDUCTORS SHOULD THE STAYWIRE BREAK AND FALL TOWARDS THE POLE. THE ADDITIONAL DISC INSULATOR IS TO BE INSTALLED WHERE THE STAY WIRE ON A WOOD OR TITAN POLE COULD BREAK AND CONTACT HV CONDUCTORS IN FALLING.
6. STAYWIRES SHALL NOT PASS OVER OR THROUGH OPERATING PLATFORMS. IF OPERATING PLATFORM EXISTS, IT SHALL BE REMOVED.
7. ENSURE LOCK NUTS ARE INSTALLED ON ALL BOLTS PASSING THROUGH POLE WITH A MINIMUM ONE VISIBLE THREAD PAST THE LOCK NUT.
8. ALL DIMENSIONS ARE IN MILLIMETRES UNLESS OTHERWISE STATED.

EMF/PDF CREATION DATE 17/06/2026

ALTERATIONS

ORIGINAL ISSUE	
----------------	--

REFERENCE	
NEW DRAWING	

	
DRAWN	ANSS
DRAFTING CHECK	ANSS
DESIGNED BY	T.KINZHRA
CHECKED BY	B.PAPALIA
APPROVED BY	B.PAPALIA
DATE APPROVED	17-04-2026

© Tasmanian Networks PTY. LTD. trading as TasNetworks ABN 24 167 957 299		NO PART OF THIS DRAWING MAY BE REPRODUCED, STORED IN A RETRIEVAL SYSTEM IN ANY FORM, OR TRANSMITTED BY ANY MEANS WITHOUT THE PRIOR PERMISSION OF TASNETWORKS	
TITLE <b>STAYS GENERAL NOTES &amp; CODES</b>		SCALE NTS	
D - OHC - H100 - SD - 002		A4	
		REVISION B	

DWG STATUS STANDARD

BM DWG NO D-OHC-H100-SD-002

BM REV B

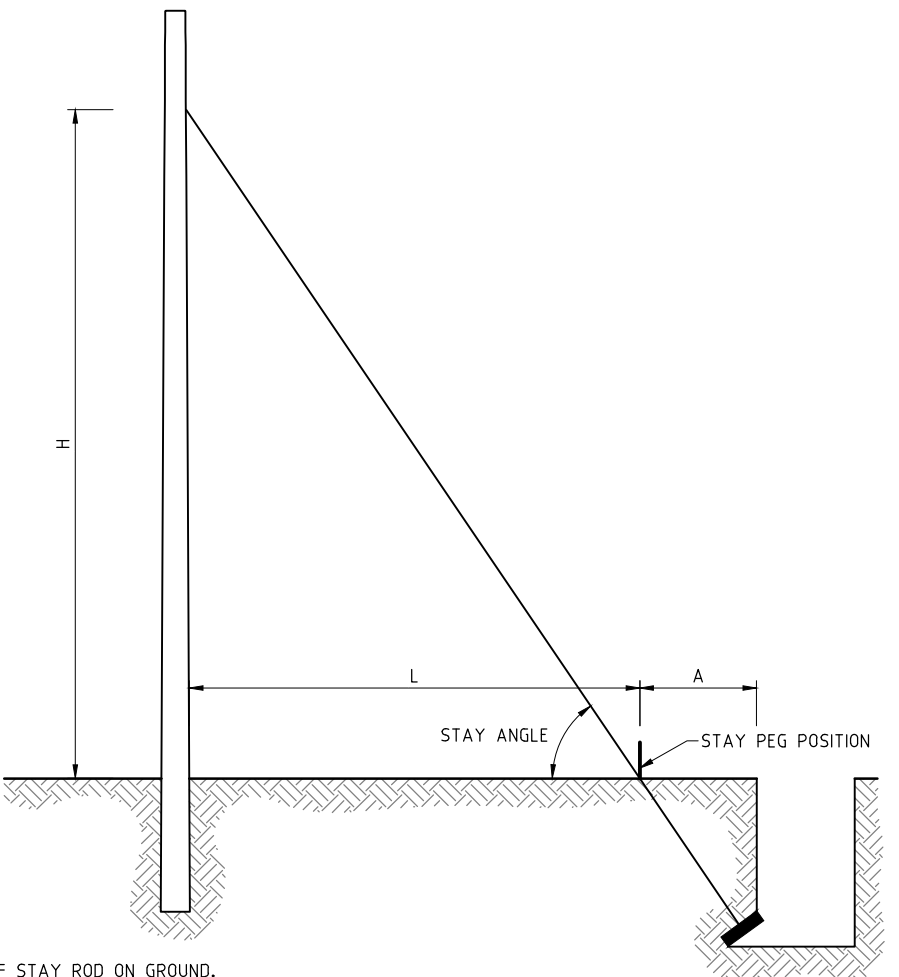
1 2 3 4 5 6 7

A

B

C

D



REFER TO RELEVANT DRAWINGS FOR EACH ANCHOR TYPE FOR 'D'

L = POSITION OF STAY ROD ON GROUND.  
A = POSITION OF ANCHOR FROM 'L' OR HOLE FOR ANCHOR BLOCK.

STAY ANGLE	STAY SIZE	LENGTHS 'L' AND 'A' (ON LEVEL GROUND) FOR VARIOUS VALUES OF 'H'																	
		H=6000		H=6500		H=7000		H=7500		H=8000		H=8500		H=9000		H=9500		H=10000	
		L	A	L	A	L	A	L	A	L	A	L	A	L	A	L	A	L	A
45°	19/2.00	6000	1400	6500	1400	7000	1400	7500	1400	8000	1400	8500	1400	9000	1400	9500	1400	10000	1400
50°	19/2.00	5035	1175	5455	1175	5875	1175	6295	1175	6715	1175	7130	1175	7550	1175	7970	1175	8400	1175
55°	19/2.00	4200	980	4550	980	4900	980	5250	980	5600	980	5950	980	6300	980	6650	980	7100	980
60°	19/2.00	3465	810	3755	810	4040	810	4330	810	4620	810	4910	810	5200	810	5485	810	5775	810

NOTES:  
1. ALL DIMENSIONS ARE IN MILLIMETRES UNLESS OTHERWISE STATED.

EMF/PDF CREATION DATE 17/06/2026

ALTERATIONS	ORIGINAL ISSUE	

REFERENCE
NEW DRAWING

DRAWN	MEGARAR PTY LTD
DRAFTING CHECK	MEGARAR PTY LTD
DESIGNED BY	T.JONYZHA
CHECKED BY	B.PAPALIA
APPROVED BY	B.PAPALIA
DATE APPROVED	17-04-2026

© Tasmanian Networks PTY. LTD. trading as TasNetworks ABN: 24 167 357 299		NO PART OF THIS DRAWING MAY BE REPRODUCED, STORED IN A RETRIEVAL SYSTEM IN ANY FORM OR TRANSMITTED BY ANY MEANS WITHOUT THE PRIOR PERMISSION OF TASNETWORKS	
STAYS GENERAL NOTES STAY ANGLE TABLE		SCALE	NTS
D - OHC - H100 - SD - 003		A4	REVISION A

DWG STATUS STANDARD

BM DWG NO D-OHC-H100-SD-003

BM REV A

1 2 3 4 5 6 7

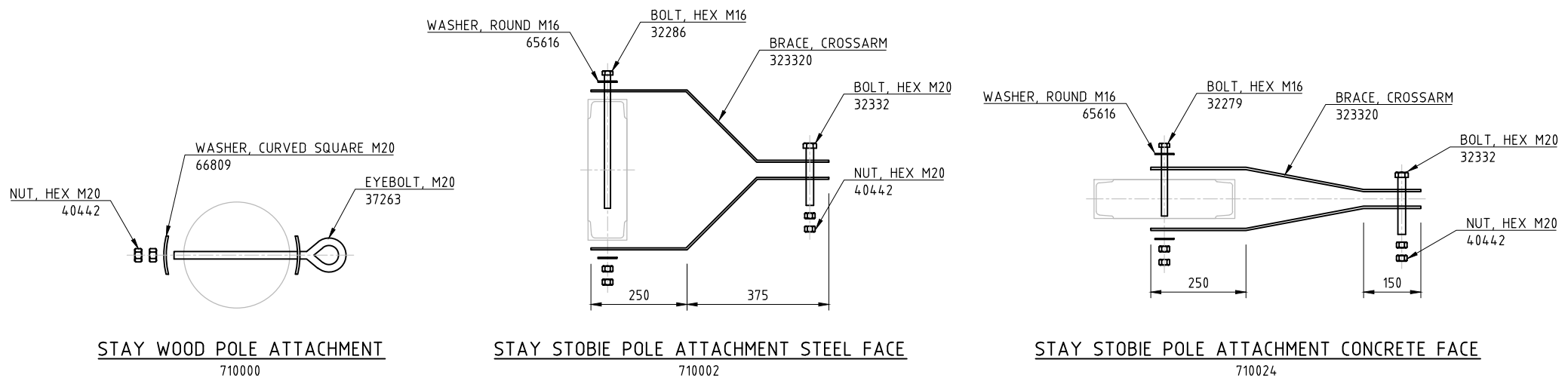
A

B

C

D

E



STAY WOOD POLE ATTACHMENT  
710000

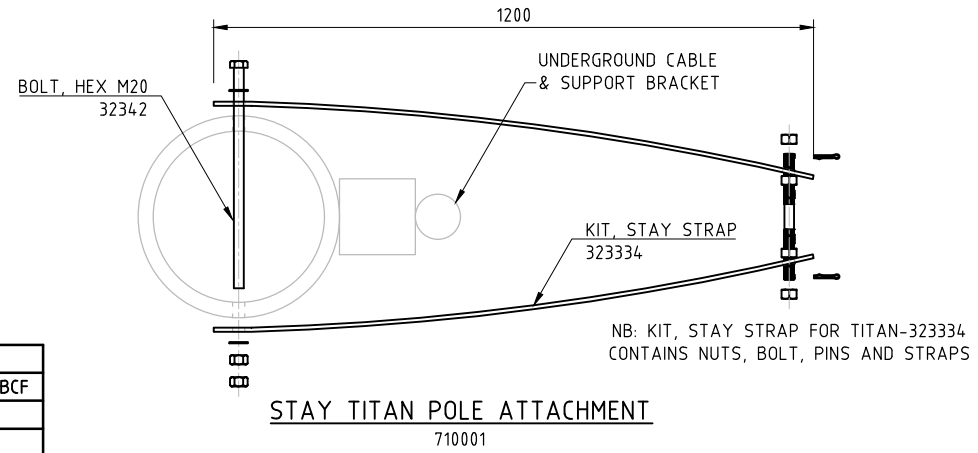
STAY STOBIE POLE ATTACHMENT STEEL FACE  
710002

STAY STOBIE POLE ATTACHMENT CONCRETE FACE  
710024

SAP ASSEMBLY		710000
MATERIAL	DESCRIPTION	OH/STAY/POLEATTACH/WOOD
37263	EYE BOLT, FORGED M20x350mm GAL C/W NUT	1
66809	WASHER, CURVED SQUARE M20 100mm	2
40442	NUT, HEX M20 THREAD GALVANISED STEEL	1

SAP ASSEMBLY		710001
MATERIAL	DESCRIPTION	OH/STAY/POLEATTACH/TITAN
323334	KIT, STAY STRAP FOR TITAN 40x1200x8mm GAL.	2
32342	BOLT, HEX HEAD M20x450mm GAL. C/W NUT	1
40442	NUT, HEX M20 THREAD GALVANISED STEEL	1
65617	WASHER, FLAT ROUND M20x37mm GAL.	2

SAP ASSEMBLY		710002	710024
MATERIAL	DESCRIPTION	OH/STAY/POLEATTACH/STOBSF	OH/STAY/POLEATTACH/STOBCF
323320	BRACE, CROSSARM 50x716x6mm THICK GAL.	2	2
32286	BOLT, HEX HEAD M16x300mm GAL. C/W NUT	1	
32279	BOLT, HEX HEAD M16x180mm GAL. C/W NUT		1
32332	BOLT, HEX HEAD M20x150mm GAL. C/W NUT	1	1
40441	NUT, HEX M16 THREAD GALVANISED STEEL	2	2
65616	WASHER, FLAT ROUND M16x30mm GAL.	2	2
40442	NUT, HEX M20 THREAD GALVANISED STEEL	1	1



STAY TITAN POLE ATTACHMENT  
710001

NB: KIT, STAY STRAP FOR TITAN-323334 CONTAINS NUTS, BOLT, PINS AND STRAPS

NOTES:  
1. ALL DIMENSIONS ARE IN MILLIMETRES UNLESS OTHERWISE STATED.

EMF/PDF CREATION DATE 17/06/2026

ALTERATIONS	ORIGINAL ISSUE	

REFERENCE			© Tasmanian Networks PTY. LTD. trading as TasNetworks ABN 24 167 957 299	NO PART OF THIS DRAWING MAY BE REPRODUCED, STORED IN A RETRIEVAL SYSTEM IN ANY FORM OR TRANSMITTED BY ANY MEANS WITHOUT THE PRIOR PERMISSION OF TASNETWORKS
NEW DRAWING				
DRAWN	MEGAVAR PTY LTD			
DRAFTING CHECK	MEGAVAR PTY LTD			
DESIGNED BY	TJONYZHA			
CHECKED BY	B.PAPALIA			
APPROVED BY	B.PAPALIA			
DATE APPROVED	17-04-2026			
D - OHC - H101 - SD - 001				REVISION A

BM DWG NO D-OHC-H101-SD-001

BM REV A

1 2 3 4 5 6 7

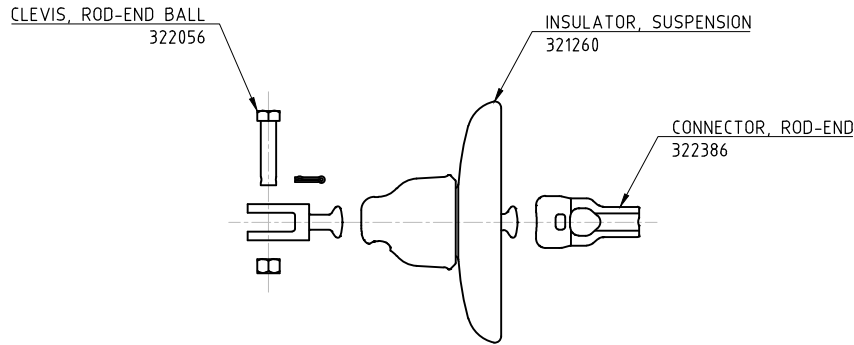
A

B

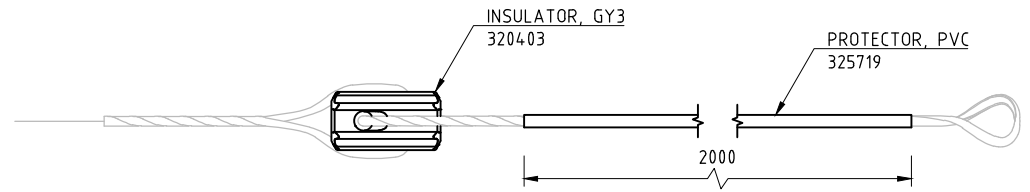
C

D

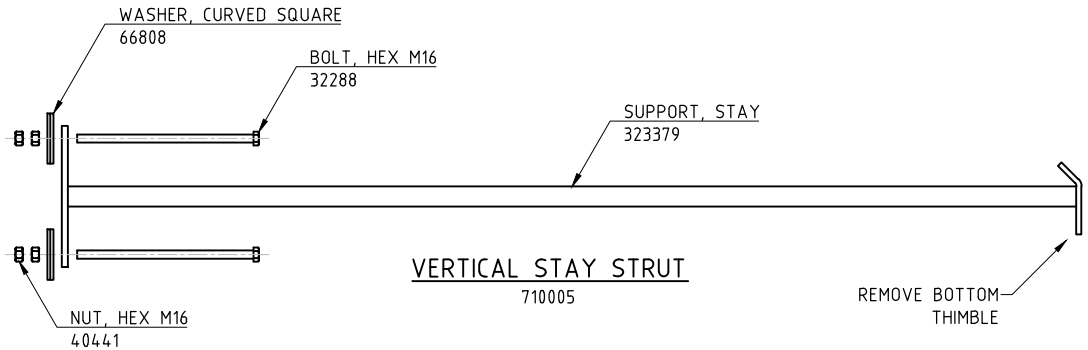
E



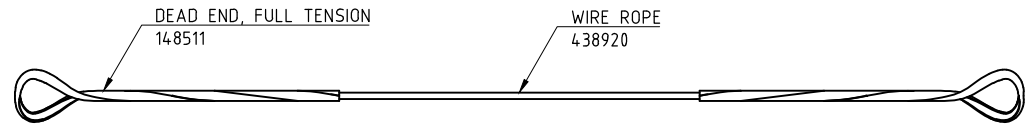
**STAY HV DISC INSULATOR**  
710003



**STAY INSULATOR**  
710004



**VERTICAL STAY STRUT**  
710005



**STAY WIRE**  
710006

MATERIAL	SAP ASSEMBLY DESCRIPTION	710003
	OH/STAY/DISCINSUL	
321260	INSULATOR, SUSPENSION 146mm DISC D70S	1
322056	CLEVIS, ROD-END BALL 16mm 70kN MIN-FAIL	1
322386	CONNECTOR, ROD-END 16mm 80kN MIN-FAIL MCI	1

MATERIAL	SAP ASSEMBLY DESCRIPTION	710004
	OH/STAY/INSUL	
320403	INSULATOR, STRAIN GY3 LILING GUY-TYPE	1
325719	PROTECTOR, GUY SLIT PVC 25x2000mm WH	1

MATERIAL	SAP ASSEMBLY DESCRIPTION	710005
	OH/STAY/STRUT/VERT	
32288	BOLT, HEX HEAD M16x350mm GAL. C/W NUT	2
40441	NUT, HEX M16 THREAD GALVANISED STEEL	2
66808	WASHER, CURVED SQUARE M16 100mm	2
323379	SUPPORT, STAY 40x40x2000mm VERTICAL	1

MATERIAL	SAP ASSEMBLY DESCRIPTION	TYPE	710006
	OH/STAY/WIRE		
438920	WIRE ROPE, STRAND 19/2.00 G1320 50m COIL	M	7
148511	DEADEND, FULL TENSION 19/2.00 GAL. COND	EA	2

**NOTES:**

1. ALL DIMENSIONS ARE IN MILLIMETRES UNLESS OTHERWISE STATED.

EMF/PDF CREATION DATE 17/06/2026

ALTERNATIONS ORIGINAL ISSUE

REFERENCE	
NEW DRAWING	

DRAWN	MEGAVAR PTY LTD
DRAFTING CHECK	MEGAVAR PTY LTD
DESIGNED BY	T.JONYZHA
CHECKED BY	B.PAPALIA
APPROVED BY	B.PAPALIA
DATE APPROVED	17-04-2026

© Tasmanian Networks PTY. LTD. Trading as TasNetworks ABN 24 167 357 299		NO PART OF THIS DRAWING MAY BE REPRODUCED, STORED IN A RETRIEVAL SYSTEM IN ANY FORM OR TRANSMITTED BY ANY MEANS WITHOUT THE PRIOR PERMISSION OF TASNETWORKS	
TITLE <b>STAYS SUB-ASSEMBLIES INSULATORS, STAY STRUT &amp; STAY WIRE</b>		SCALE NTS	REVISION A
D - OHC - H101 - SD - 002		BM REV A	

1 2 3 4 5 6 7

A

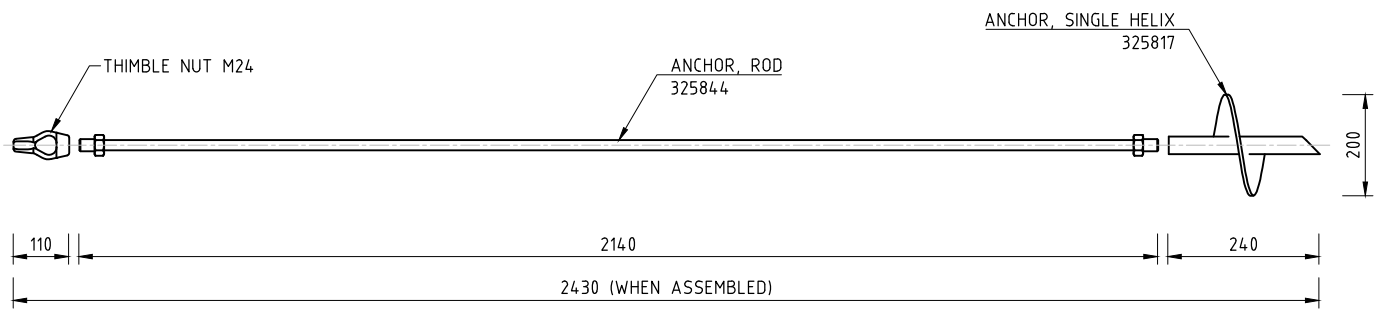
B

C

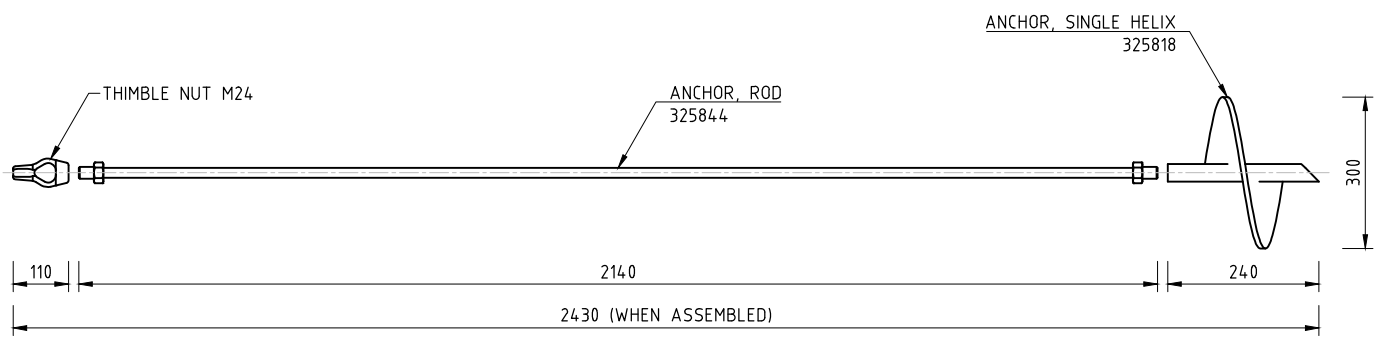
D

E

ALTERATIONS  
ORIGINAL ISSUE



STAY SCREW ANCHOR 200mm  
710007



STAY SCREW ANCHOR 300mm  
710008

MATERIAL	SAP ASSEMBLY	710007	710008
	DESCRIPTION	OH/STAY/ANCHOR/200-SCREW	OH/STAY/ANCHOR/300-SCREW
325844	ANCHOR, ROD SCREW 20x2140mm M24 NUT	1	1
325817	ANCHOR, GUY SINGLE HELIX 200mm x M24 ROD	1	
325818	ANCHOR, GUY SINGLE HELIX 300mm x M24 ROD		1

NOTES:

1. ALL DIMENSIONS ARE IN MILLIMETRES UNLESS OTHERWISE STATED.

REFERENCE NEW DRAWING: SUPERSEDES D-OHC-L007-SD-003			© Tasmanian Networks PTY. LTD. trading as TasNetworks ABN: 24 167 357 299		NO PART OF THIS DRAWING MAY BE REPRODUCED, STORED IN A RETRIEVAL SYSTEM IN ANY FORM, OR TRANSMITTED BY ANY MEANS WITHOUT THE PRIOR PERMISSION OF TASNETWORKS	
DRAWN: MEGAVAR PTY LTD DRAFTING CHECK: MEGAVAR PTY LTD DESIGNED BY: TONY ZHHA CHECKED BY: B.PAPALIA APPROVED BY: B.PAPALIA DATE APPROVED: 17-04-2026			TITLE STAYS SUB-ASSEMBLIES SCREW ANCHORS		SCALE NTS	REVISION A

D - OHC - H101 - SD - 003

1 2 3 4 5 6 7

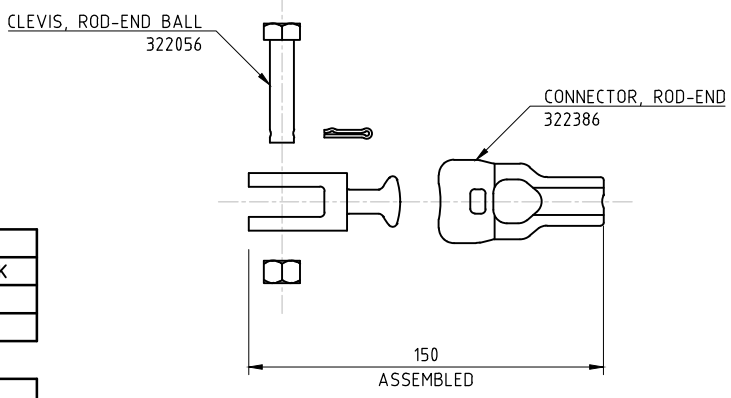
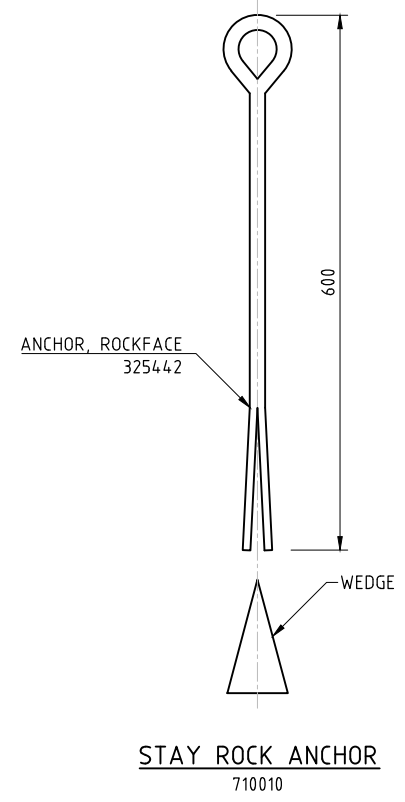
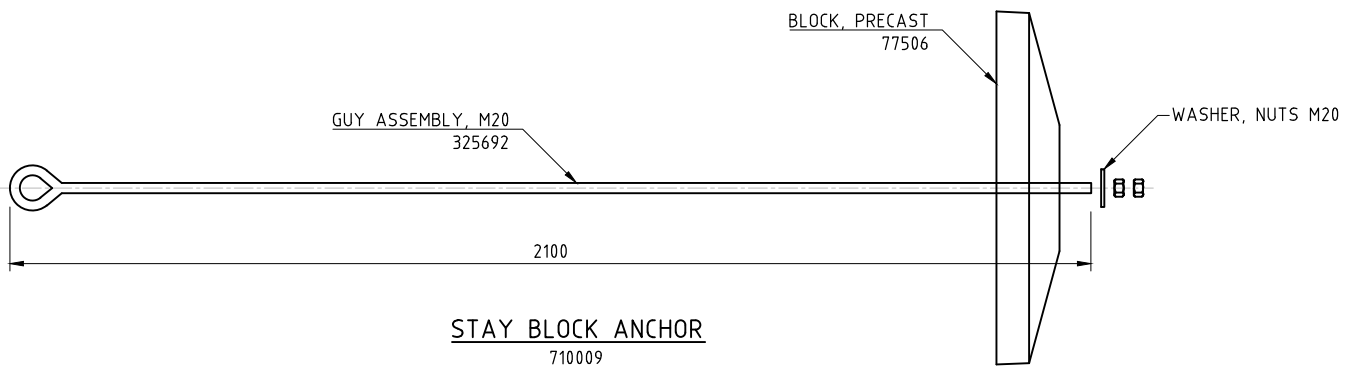
A

B

C

D

E



MATERIAL	SAP ASSEMBLY DESCRIPTION	710009
325692	GUY ASSEMBLY, FORGED EYE M20x2100mm	1
77506	BLOCK, PRECAST CONCRETE D-OH1-1.2/1 REV.2	1

MATERIAL	SAP ASSEMBLY DESCRIPTION	710010
325442	ANCHOR, ROCKFACE 600mm WITH WEDGE	1

MATERIAL	SAP ASSEMBLY DESCRIPTION	710011
322056	CLEVIS, ROD-END BALL 16mm 70kN MIN-FAIL	1
322386	CONNECTOR, ROD-END 16mm 80kN MIN-FAIL MCI	1

NOTES:  
1. ALL DIMENSIONS ARE IN MILLIMETRES UNLESS OTHERWISE STATED.

EMF/PDF CREATION DATE 17/06/2026

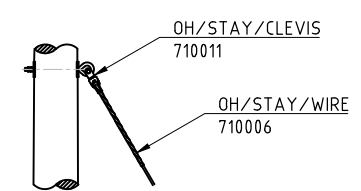
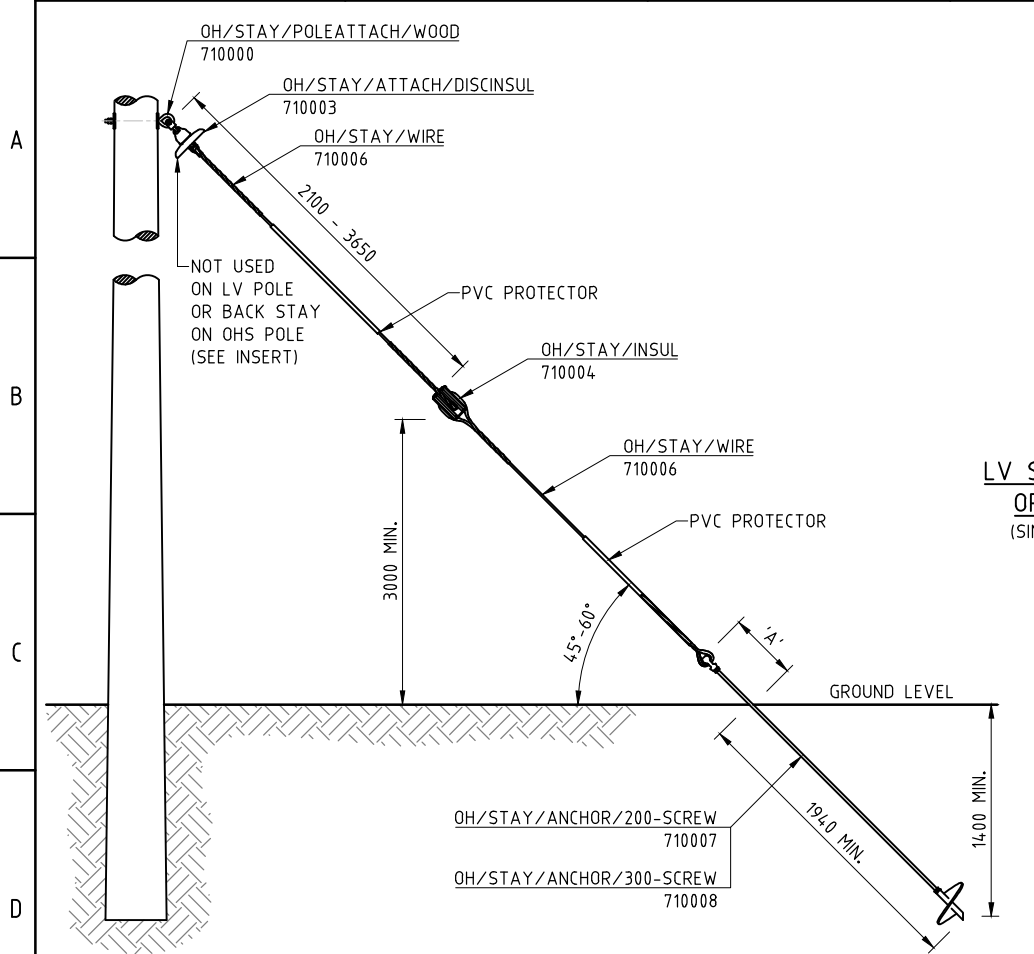
ALTERATIONS	ORIGINAL ISSUE	

REFERENCE
NEW DRAWING

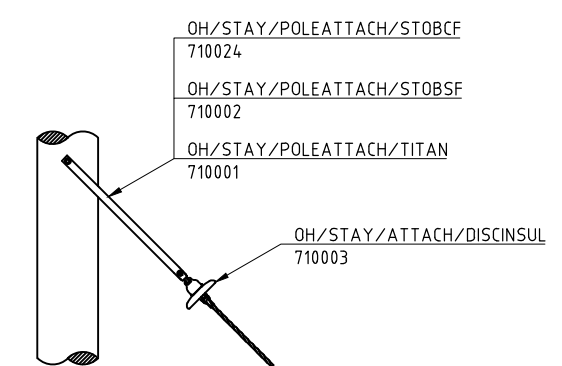
DRAWN	MEGARAR PTY LTD
DRAFTING CHECK	MEGARAR PTY LTD
DESIGNED BY	T.XINYI
CHECKED BY	B.PAPALIA
APPROVED BY	B.PAPALIA
DATE APPROVED	17-04-2026

© Tasmanian Networks PTY. LTD. trading as TasNetworks ABN: 24 167 357 299		NO PART OF THIS DRAWING MAY BE REPRODUCED, STORED IN A RETRIEVAL SYSTEM IN ANY FORM OR TRANSMITTED BY ANY MEANS WITHOUT THE PRIOR PERMISSION OF TASNETWORKS
TITLE STAYS SUB-ASSEMBLIES BLOCK AND ROCK ANCHORS		SCALE NTS A4 REVISION A
D - OHC - H101 - SD - 004		

1 2 3 4 5 6 7



LV STAY TO WOOD POLE  
OR BACK STAY OHS  
(SIMILAR TO HV WOOD POLE)



HV STAY TO STOBIE,  
TITAN OR CABLE POLE

HV STAY TO WOOD POLE

STAY ROD ABOVE GROUND	
STAY ANGLE	45°
DIM 'A' MIN.	100
DIM 'A' MAX.	440

- NOTES:
- REFER D-OHC-H100-SD-002 FOR GENERAL NOTES.
  - ALL DIMENSIONS ARE IN MILLIMETRES UNLESS OTHERWISE STATED.

MATERIAL	DESCRIPTION
710000	OH/STAY/POLEATTACH/WOOD
710001	OH/STAY/POLEATTACH/TITAN
710002	OH/STAY/POLEATTACH/STOBSF
710003	OH/STAY/ATTACH/DISCINSUL
710004	OH/STAY/INSUL
710006	OH/STAY/WIRE
710007	OH/STAY/ANCHOR/200-SCREW
710008	OH/STAY/ANCHOR/300-SCREW
710011	OH/STAY/CLEVIS

HV SCREW IN STAYS								LV SCREW IN STAYS							
710012	710014	710025	710030	710016	710031	710018	710036	710013	710015	710037	710038	710017	710039	710019	710040
STAY/G/W/200-SCREW/HV	STAY/G/W/300-SCREW/HV	STAY/G/T/200-SCREW/HV	STAY/G/T/300-SCREW/HV	STAY/G/STSF/200-SCREW/HV	STAY/G/STCF/200-SCREW/HV	STAY/G/STSF/300-SCREW/HV	STAY/G/STCF/300-SCREW/HV	STAY/G/W/200-SCREW/LV	STAY/G/W/300-SCREW/LV	STAY/G/T/200-SCREW/LV	STAY/G/T/300-SCREW/LV	STAY/G/STSF/200-SCREW/LV	STAY/G/STCF/300-SCREW/LV	STAY/G/STSF/200-SCREW/LV	STAY/G/STCF/300-SCREW/LV
1	1	1	1	1	1	1	1	1	1	1	1	1	1	1	1

EMF/PDF CREATION DATE 17/06/2026

BM DWG NO D-OHC-H102-SD-001

ALTERATIONS ORIGINAL ISSUE

REFERENCE  
NEW DRAWING: SUPERSEDES D-OHC-L002-SD-001

TasNetworks	
DRAWN	MEGARAR PTY LTD
DRAFTING CHECK	MEGARAR PTY LTD
DESIGNED BY	T.ANYZHA
CHECKED BY	B.PAPALIA
APPROVED BY	B.PAPALIA
DATE APPROVED	17-04-2026

Tasmanian Networks PTY. LTD.  
Trading as TasNetworks  
ABN 24 167 957 299

NO PART OF THIS DRAWING MAY BE REPRODUCED, STORED IN A RETRIEVAL SYSTEM IN ANY FORM OR TRANSMITTED BY ANY MEANS WITHOUT THE PRIOR PERMISSION OF TASNETWORKS

TITLE: STAYS SCREW IN TYPE INSTALLATION DIMENSIONS GENERAL ARRANGEMENT HV & LV

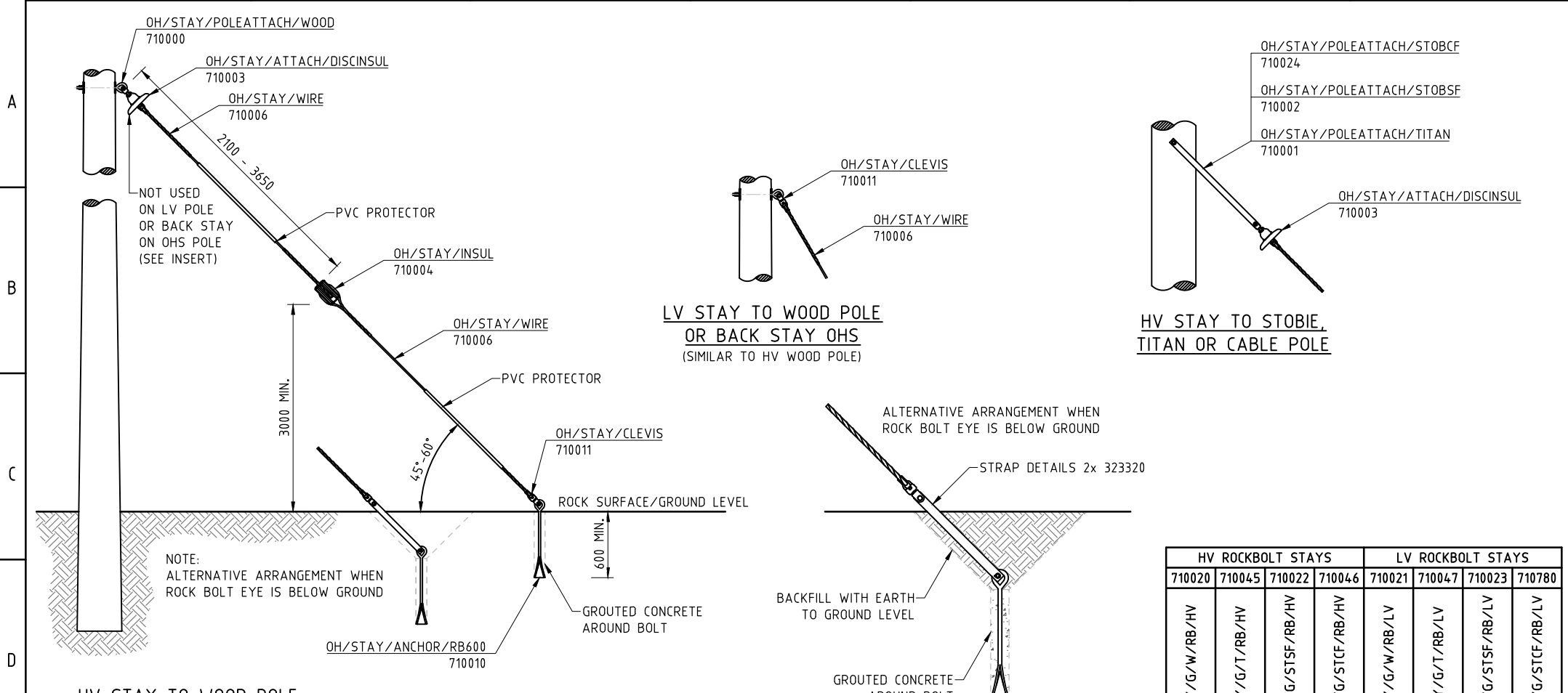
SCALE: NTS

REVISION: A4

D - OHC - H102 - SD - 001

BM REV A

1 2 3 4 5 6 7



NOTE:  
ALTERNATIVE ARRANGEMENT WHEN  
ROCK BOLT EYE IS BELOW GROUND

ALTERNATIVE ARRANGEMENT WHEN  
ROCK BOLT EYE IS BELOW GROUND

HV ROCKBOLT STAYS				LV ROCKBOLT STAYS			
710020	710045	710022	710046	710021	710047	710023	710780
STAY/G/W/RB/HV	STAY/G/T/RB/HV	STAY/G/STSF/RB/HV	STAY/G/STCF/RB/HV	STAY/G/W/RB/LV	STAY/G/T/RB/LV	STAY/G/STSF/RB/LV	STAY/G/STCF/RB/LV
1	1			1	1		
		1				1	
			1				1
1	1	1	1	1	1	1	1
2	2	2	2	2	2	2	2
1	1	1	1	1	1	1	1
1	1	1	1	2	2	2	2

MATERIAL	DESCRIPTION
710000	OH/STAY/POLEATTACH/WOOD
710001	OH/STAY/POLEATTACH/TITAN
710003	OH/STAY/POLEATTACH/STOBSF
710024	OH/STAY/POLEATTACH/STOBCF
710003	OH/STAY/ATTACH/DISCINSUL
710004	OH/STAY/INSUL
710006	OH/STAY/WIRE
710010	OH/STAY/ANCHOR/RB600
710011	OH/STAY/CLEVIS

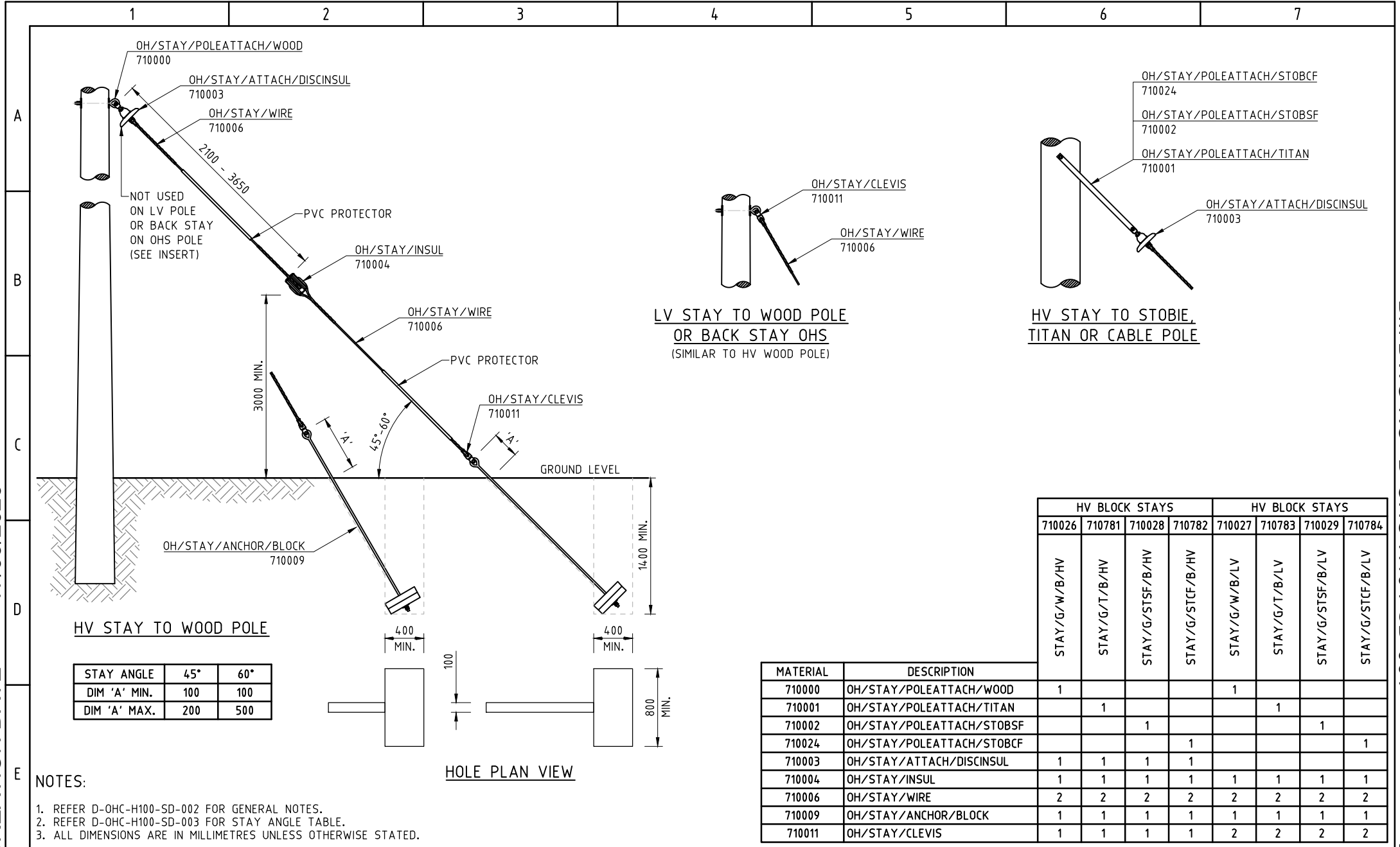
NOTES:  
1. REFER D-OHC-H100-SD-002 FOR GENERAL NOTES.  
2. ALL DIMENSIONS ARE IN MILLIMETRES UNLESS OTHERWISE STATED.

EMF/PDF CREATION DATE 17/06/2026

BM DWG NO D-OHC-H103-SD-001

ALTERATIONS	ORIGINAL ISSUE	REFERENCE NEW DRAWING: SUPERSEDES D-OHC-L003-SD-001		© Tasmanian Networks PTY. LTD. trading as TasNetworks ABN 24 167 357 299	NO PART OF THIS DRAWING MAY BE REPRODUCED, STORED IN A RETRIEVAL SYSTEM IN ANY FORM, OR TRANSMITTED BY ANY MEANS WITHOUT THE PRIOR PERMISSION OF TASNWORKS	TITLE	SCALE
						STAYS ROCK BOLT TYPE INSTALLATION DIMENSIONS GENERAL ARRANGEMENT HV & LV	NTS  A4  REVISION A
			DRAWN: MEGAVAR PTY LTD DRAFTING CHECK: MEGAVAR PTY LTD DESIGNED BY: TONY ZHUA CHECKED BY: B.PAPALIA APPROVED BY: B.PAPALIA DATE APPROVED: 17-04-2026			D - OHC - H103 - SD - 001	

BM REV A



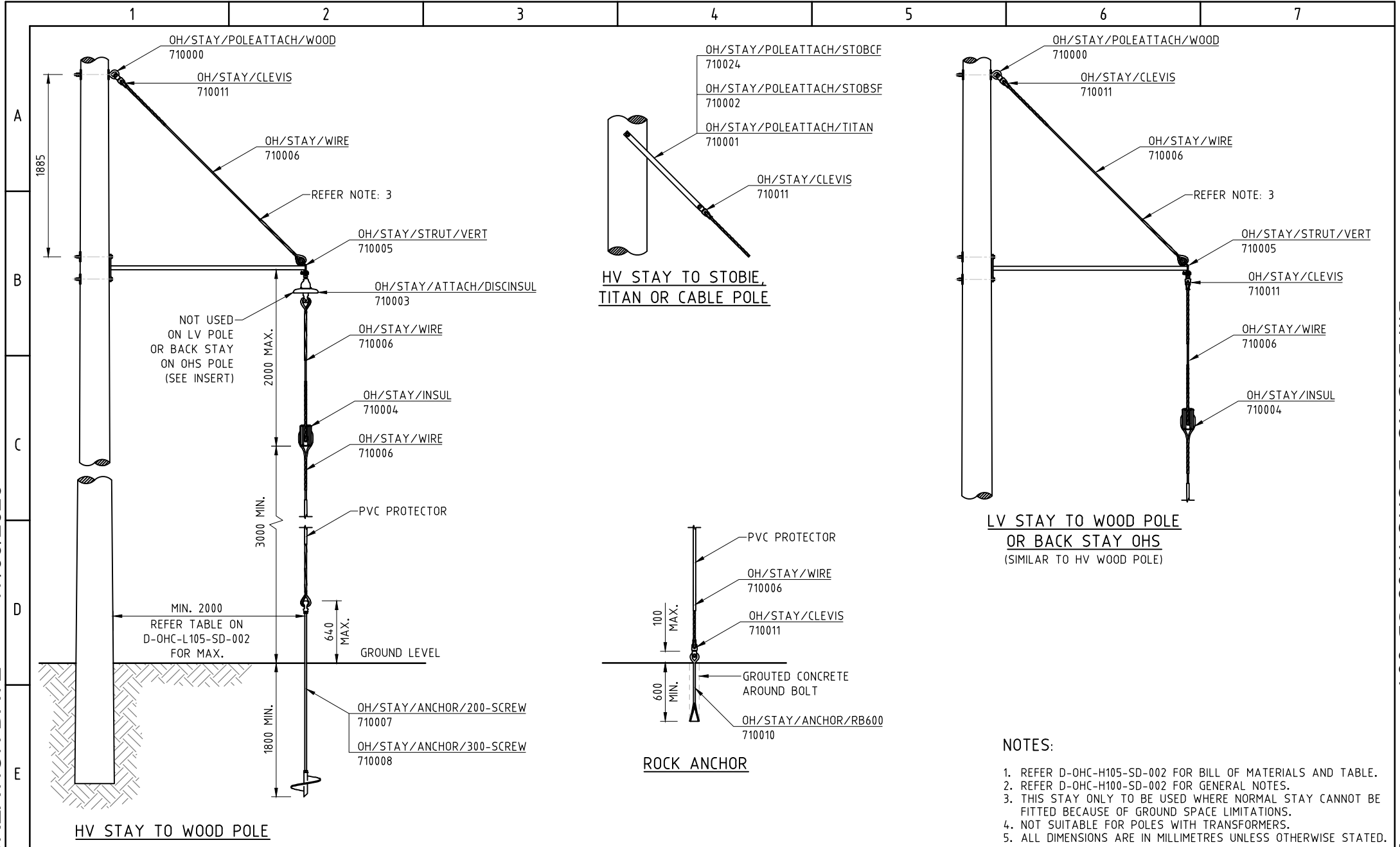
NOTES:  
 1. REFER D-OHC-H100-SD-002 FOR GENERAL NOTES.  
 2. REFER D-OHC-H100-SD-003 FOR STAY ANGLE TABLE.  
 3. ALL DIMENSIONS ARE IN MILLIMETRES UNLESS OTHERWISE STATED.

ALTERATIONS	ORIGINAL ISSUE	REFERENCE			© Tasmanian Networks PTY. LTD. trading as TasNetworks ABN 24 167 357 299	NO PART OF THIS DRAWING MAY BE REPRODUCED, STORED IN A RETRIEVAL SYSTEM IN ANY FORM OR TRANSMITTED BY ANY MEANS WITHOUT THE PRIOR PERMISSION OF TASNETWORKS
		NEW DRAWING: SUPERSEDES D-OHC-L004-SD-001				
DRAWN: MEGAVAR PTY LTD DRAFTING CHECK: MEGAVAR PTY LTD DESIGNED BY: T.XINYI CHECKED BY: B.PAPALIA APPROVED BY: B.PAPALIA DATE APPROVED: 17-04-2026		D - OHC - H104 - SD - 001				

EMF/PDF CREATION DATE 17/06/2026

BM DWG NO D-OHC-H104-SD-001

BM REV A



EMF/PDF CREATION DATE 17/06/2026

ALTERATIONS ORIGINAL ISSUE

BM DWG NO D-OHC-H105-SD-001

BM REV A

REFERENCE NEW DRAWING: SUPERSEDES D-OHC-L005-SD-001			© Tasmanian Networks PTY. LTD. trading as TasNetworks ABN 24 167 957 299	NO PART OF THIS DRAWING MAY BE REPRODUCED, STORED IN A RETRIEVAL SYSTEM IN ANY FORM, OR TRANSMITTED BY ANY MEANS WITHOUT THE PRIOR PERMISSION OF TASNWORKS
TITLE STAYS VERTICAL STAY ARRANGEMENT INSTALLATION DIMENSIONS GENERAL ARRANGEMENT HV & LV			SCALE NTS	REVISION A
DRAWN MEGAVAR PTY LTD	DRAFTING CHECK MEGAVAR PTY LTD	DESIGNED BY T.JONYZHA	CHECKED BY B.PAPALIA	DATE APPROVED 17-04-2026
D - OHC - H105 - SD - 001			D - OHC - H105 - SD - 001	

1 2 3 4 5 6 7

- NOTES:**
1. BASED ON 2.0m STRUT SET DOWN 2.0m FROM STAYWIRE ATTACHMENT POINT.
  2. STAY STRENGTH INCREASES WHEN INSTALLED GREATER THAN THE 2.0m MINIMUM DISTANCE FROM POLE BASE.
  3. THIS TABLE IS A GUIDE ONLY AND THE DESIGN STANDARD SHALL BE CONSULTED FOR STRENGTH LIMITATIONS BASED ON ACTUAL POLE TIP LOADS.
  4. WHEN PEGGING OUT NEW CONSTRUCTION AN ALLOWANCE FOR POLE RADIUS NEEDS TO BE ADDED TO DISTANCE SHOWN.

A

B


SIMPLIFIED VERTICAL STAY MEASUREMENTS							
POLE LENGTH (m)	NOMINAL STAYWIRE ATTACHMENT POINT (m)	ANGLE FROM STRUT TIP					
		(°)	0	5	10	15	20
9.5	7.5	DISTANCE FROM POLE BASE (m)	2.00	2.48	2.96	3.47	4.00
11	9.00		2.00	2.61	3.23	3.87	4.55
12.5	10.50		2.00	2.74	3.50	4.28	5.09
14	12.00		2.00	2.87	3.76	4.68	5.64
15.5	13.50		2.00	3.00	4.03	5.08	6.18

C

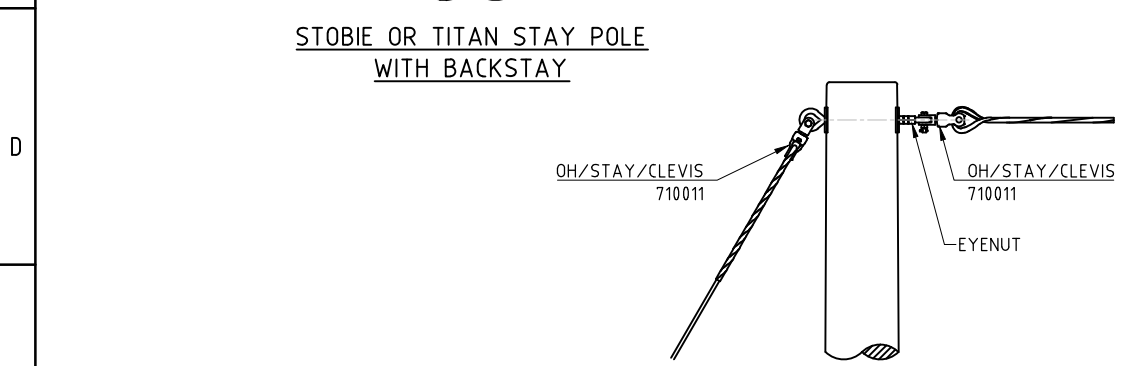
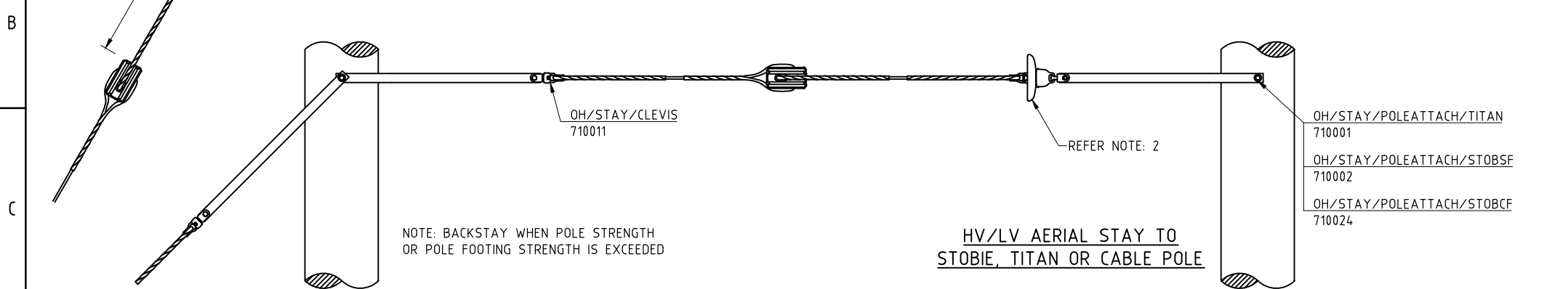
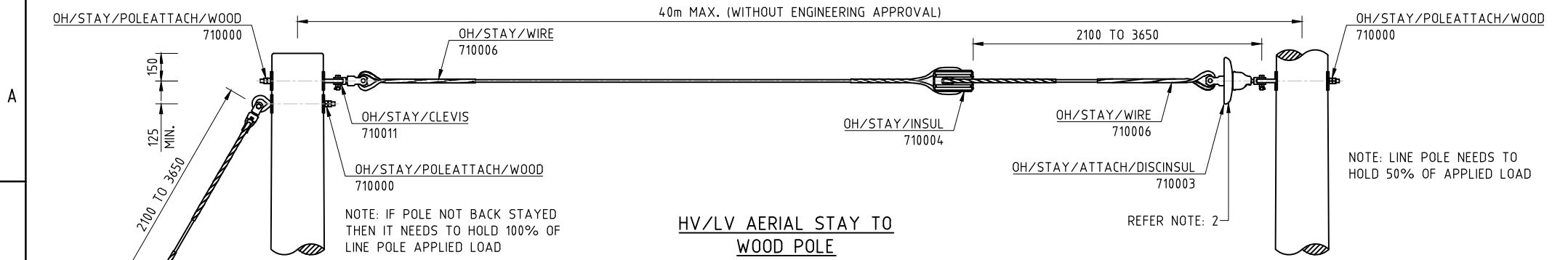
D

E

MATERIAL	DESCRIPTION	HV VERTICAL STAYS											LV VERTICAL STAYS													
		710032	710033	710789	710790	710034	710791	710035	710792	710793	710794	710795	710796	710797	710798	710799	710800	710801	710802	710803	710804	710805	710806	710807	710808	
710000	OH/STAY/POLEATTACH/WOOD	1	1						1				1	1												
710001	OH/STAY/POLEATTACH/TITAN			1	1					1					1	1								1		
710002	OH/STAY/POLEATTACH/STOBSF					1	1								1				1						1	
710024	OH/STAY/POLEATTACH/STOBCF						1	1	1									1								1
710003	OH/STAY/ATTACH/DISCINSUL	1	1	1	1	1	1	1	1	1	1	1														
710004	OH/STAY/INSUL	1	1	1	1	1	1	1	1	1	1	1														
710005	OH/STAY/STRUT/VERT	1	1	1	1	1	1	1	1	1	1	1	1	1	1	1	1	1	1	1	1	1	1	1	1	1
710006	OH/STAY/WIRE	3	3	3	3	3	3	3	3	3	3	3	3	3	3	3	3	3	3	3	3	3	3	3	3	3
710007	OH/STAY/ANCHOR/200-SCREW	1		1		1	1						1		1		1	1								
710008	OH/STAY/ANCHOR/300-SCREW		1		1			1	1						1		1		1	1						
710010	OH/STAY/ANCHOR/RB600									1	1	1											1	1	1	1
710011	OH/STAY/CLEVIS	1	1	1	1	1	1	1	1	2	2	2	2	2	2	2	2	2	2	2	2	2	3	3	3	3

ALTERNATIONS	ORIGINAL ISSUE	REFERENCE		 TasNetworks © Tasmanian Networks PTY. LTD. trading as TasNetworks ABN 24 167 957 299	NO PART OF THIS DRAWING MAY BE REPRODUCED, STORED IN A RETRIEVAL SYSTEM IN ANY FORM OR TRANSMITTED BY ANY MEANS WITHOUT THE PRIOR PERMISSION OF TASNETWORKS.
		NEW DRAWING	TITLE: STAYS VERTICAL STAY ARRANGEMENT BILL OF MATERIALS & TABLE SCALE: NTS REVISION: A		
DRAWN: MEGAVAR PTY LTD DRAFTING CHECK: MEGAVAR PTY LTD DESIGNED BY: TONYZHRA CHECKED BY: B.PAPALIA APPROVED BY: B.PAPALIA DATE APPROVED: 17-04-2026		D - OHC - H105 - SD - 002		BM DWG NO D-OHC-H105-SD-002 BM REV A	

EMF/PDF CREATION DATE 17/06/2026



NOTES:

1. REFER D-OHC-H100-SD-002 FOR GENERAL NOTES.
2. DISC INSULATOR REQUIRED HV POLE ONLY.
3. ALL DIMENSIONS ARE IN MILLIMETRES UNLESS OTHERWISE STATED.

MATERIAL	DESCRIPTION	HV AERIAL STAYS				LV AERIAL STAYS			
		710041	710785	710043	710786	710072	710787	710044	710788
710000	OH/STAY/POLEATTACH/WOOD	2				2			
710001	OH/STAY/POLEATTACH/TITAN		2				2		
710002	OH/STAY/POLEATTACH/STOBSF			2				2	
710024	OH/STAY/POLEATTACH/STOBCF				2				2
710003	OH/STAY/ATTACH/DISCINSUL	1	1	1	1				
710004	OH/STAY/INSUL	1	1	1	1	1	1	1	1
710006	OH/STAY/WIRE	2	2	2	2	2	2	2	2
710011	OH/STAY/CLEVIS	1	1	1	1	2	2	2	2

EMF/PDF CREATION DATE 17/06/2026

BM DWG NO D-OHC-H106-SD-001

BM REV B

ALTERATIONS ORIGINAL ISSUE

REFERENCE NEW DRAWING: SUPERSEDES D-OHC-L006-SD-001			© Tasmanian Networks PTY. LTD. trading as TasNetworks ABN 24 167 357 299	NO PART OF THIS DRAWING MAY BE REPRODUCED, STORED IN A RETRIEVAL SYSTEM IN ANY FORM, OR TRANSMITTED BY ANY MEANS WITHOUT THE PRIOR PERMISSION OF TASNWORKS
DRAWN: ANSS DRAFTING CHECK: ANSS DESIGNED BY: T.XINYI CHECKED BY: B.PAPALIA APPROVED BY: B.PAPALIA DATE APPROVED: 17-04-2026		TITLE STAYS AERIAL STAY INSTALLATION DIMENSIONS GENERAL ARRANGEMENT HV & LV		SCALE NTS A4 REVISION B
D - OHC - H106 - SD - 001				

1 2 3 4 5 6 7

A

B

C

D

E

REFER HV SECTION FOR HV CONSTRUCTIONS

MIN. 460 LIVE HV

MIN. 230 ACTIVE  
MIN. 150 NEUTRAL

REFER LV SECTION FOR LV CONSTRUCTIONS

DISC INSULATOR REQUIRED  
HV POLE ONLY

REFER TO D-OHC-H106-SD-001 FOR AERIAL STAY ARRANGEMENT

NO INSULATOR REQUIRED

REFER TO D-OHC-H105-SD-001 FOR VERTICAL STAY ARRANGEMENT

NO INSULATOR REQUIRED

INSULATOR REQUIRED

HV STAY TO WOOD POLE  
OH STAY TO VERTICAL STAY


NOTES:

1. ALL DIMENSIONS ARE IN MILLIMETRES UNLESS OTHERWISE STATED.

EMF/PDF CREATION DATE 17/06/2026

ALTERATIONS ORIGINAL ISSUE

REFERENCE	
NEW DRAWING	

	
DRAWN	MEGAVAR PTY LTD
DRAFTING CHECK	MEGAVAR PTY LTD
DESIGNED BY	T.XINYI
CHECKED BY	B.PAPALIA
APPROVED BY	B.PAPALIA
DATE APPROVED	17-06-2026

© Tasmanian Networks PTY. LTD. trading as TasNetworks ABN: 24 167 357 299		NO PART OF THIS DRAWING MAY BE REPRODUCED, STORED IN A RETRIEVAL SYSTEM IN ANY FORM, OR TRANSMITTED BY ANY MEANS WITHOUT THE PRIOR PERMISSION OF TASNETWORKS	
TITLE STAYS AERIAL STAY TO VERTICAL STAY INSULATOR REQUIREMENTS & CLEARANCES		SCALE NTS	
D - OHC - H106 - SD - 002		REVISION A	

DWG STATUS STANDARD

BM DWG NO D-OHC-H106-SD-002

BM REV A

1 2 3 4 5 6 7

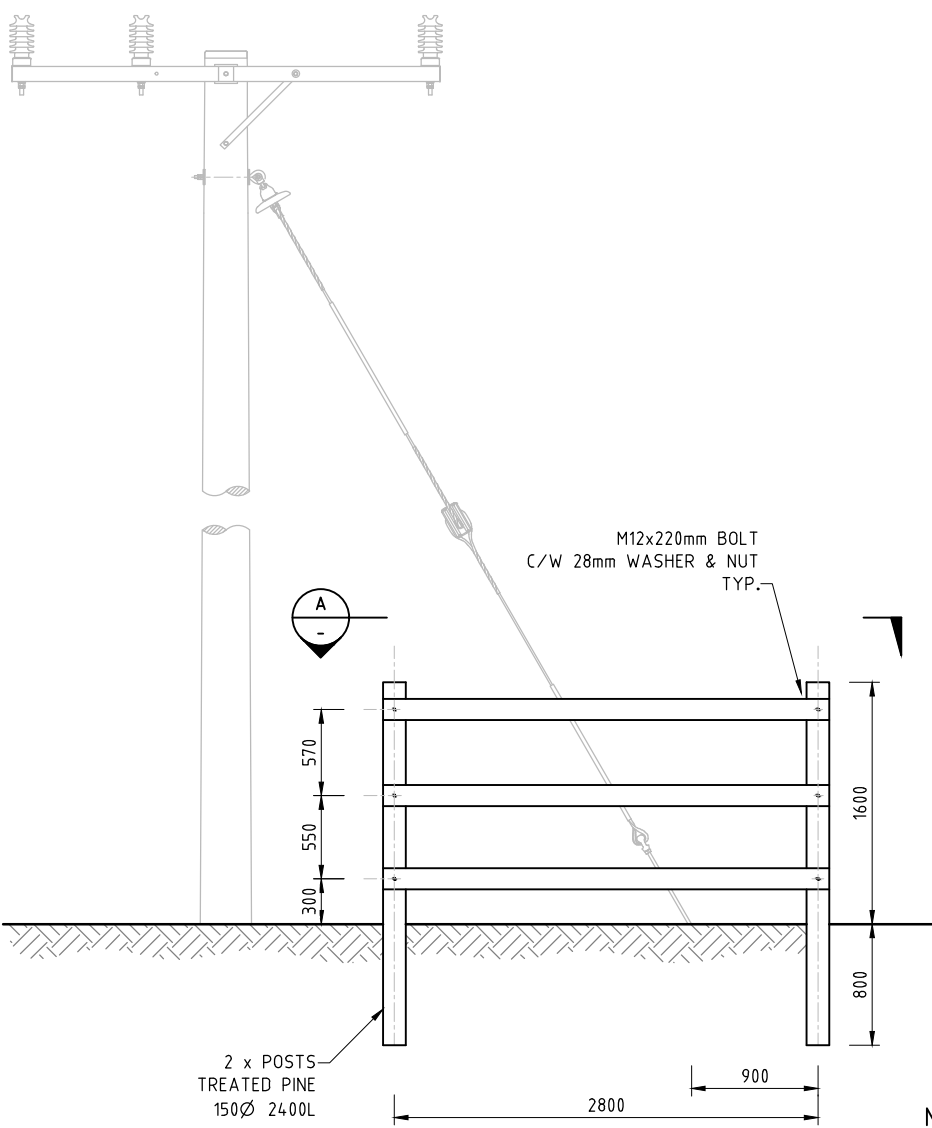
A

B

C

D

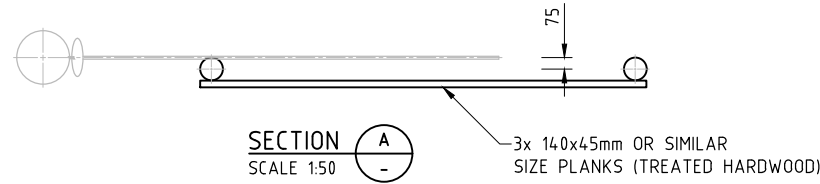
E



M12x220mm BOLT  
C/W 28mm WASHER & NUT  
TYP.

2 x POSTS  
TREATED PINE  
150Ø 2400L

**CATTLE/HORSE GUARD**  
325697



SECTION A  
SCALE 1:50

**NOTES:**

1. ENSURE INSTALLATION OF GUARD DOES NOT AID ACCESS BY OTHERS TO TASNETWORKS ASSETS INSTALLED ON ADJACENT POLE.
2. APPLY LOCK NUTS TO ALL BOLTS.
3. EXCESS BOLT LENGTH GREATER THAN 5mm TO BE CUT OFF. REMOVE SHARPNESS BY GRINDING OR HAMMERING.
4. ALL MATERIALS USED ARE TO BE "NEW" NOT "SECOND HAND" OR "RECLAIMED".
5. ALL DIMENSIONS ARE IN MILLIMETRES UNLESS OTHERWISE STATED.

EMF/PDF CREATION DATE 10/04/2026

ALTERATIONS ORIGINAL ISSUE

REFERENCE	
NEW DRAWING: SUPERSEDES D-OHC-L009-SD-001	

DRAWN	MEGARAR PTY LTD
DRAFTING CHECK	MEGARAR PTY LTD
DESIGNED BY	T.JONYZHA
CHECKED BY	B.PAPALIA
APPROVED BY	B.PAPALIA
DATE APPROVED	17/06/2026

© Tasmanian Networks PTY. LTD. trading as TasNetworks ABN: 24 167 957 299		NO PART OF THIS DRAWING MAY BE REPRODUCED, STORED IN A RETRIEVAL SYSTEM IN ANY FORM OR TRANSMITTED BY ANY MEANS WITHOUT THE PRIOR PERMISSION OF TASNETWORKS	
TITLE <b>STAYS CATTLE / HORSE GUARD GENERAL ARRANGEMENT</b>		SCALE NTS	A4
D - OHC - H107 - SD - 001		REVISION A	

DWG STATUS STANDARD

BM DWG NO D-OHC-H107-SD-001

BM REV A

<b>BOM No. in SAP</b>	<b>APL</b>	<b>Material BOM Description</b>	<b>Drawing</b>
710000	OH/STAY/POLEATTACH/WOOD	OH, STAY WOOD POLE ATTACH	D-OHC-H101-SD-001
710001	OH/STAY/POLEATTACH/TITAN	OH, STAY TITAN POLE ATTACH	D-OHC-H101-SD-001
710002	OH/STAY/POLEATTACH/STOBSF	OH, STAY STOBIE STEEL FACE POLE ATTACH	D-OHC-H101-SD-001
710003	OH/STAY/DISCINSUL	OH, STAY DISC INSULATOR	D-OHC-H101-SD-002
710004	OH/STAY/INSUL	OH, STAY GY3 INSULATOR	D-OHC-H101-SD-002
710005	OH/STAY/STRUT/VERT	OH, STRUT VERTICAL STAY	D-OHC-H101-SD-002
710006	OH/STAY/WIRE	OH, STAY WIRE	D-OHC-H101-SD-002
710007	OH/STAY/ANCHOR/200-SCREW	OH, STAY SCREW ANCHOR, 200MM	D-OHC-H101-SD-003
710008	OH/STAY/ANCHOR/300-SCREW	OH, STAY SCREW ANCHOR, 300MM	D-OHC-H101-SD-003
710009	OH/STAY/ANCHOR/BLOCK	OH, STAY ANCHOR BLOCK	D-OHC-H101-SD-004
710010	OH/STAY/ANCHOR/RB600	OH, STAY ANCHOR ROCK BOLT, 600MM	D-OHC-H101-SD-004
710011	OH/STAY/CLEVIS	OH, BALL CLEVIS	D-OHC-H101-SD-004
710012	STAY/G/W/200-SCREW/HV	STAY GRND, WOOD POLE, 200MM SCREW, HV	D-OHC-H102-SD-001
710013	STAY/G/W/200-SCREW/LV	STAY GRND, WOOD POLE, 200MM SCREW, LV	D-OHC-H102-SD-001
710014	STAY/G/W/300-SCREW/HV	STAY GRND, WOOD POLE, 300MM SCREW, HV	D-OHC-H102-SD-001
710015	STAY/G/W/300-SCREW/LV	STAY GRND, WOOD POLE, 300MM SCREW, LV	D-OHC-H102-SD-001
710016	STAY/G/STSF/200-SCREW/HV	STAY GRND, STOBIE ST FACE, 200MM SCREW, HV	D-OHC-H102-SD-001
710017	STAY/G/STSF/200-SCREW/LV	STAY GRND, STOBIE ST FACE, 200MM SCREW, LV	D-OHC-H102-SD-001
710018	STAY/G/STSF/300-SCREW/HV	STAY GRND, STOBIE ST FACE, 300MM SCREW, HV	D-OHC-H102-SD-001
710019	STAY/G/STSF/300-SCREW/LV	STAY GRND, STOBIE ST FACE, 300MM SCREW, LV	D-OHC-H102-SD-001
710020	STAY/G/W/RB/HV	STAY GRND, WOOD POLE, ROCK BOLT, HV	D-OHC-H103-SD-001
710021	STAY/G/W/RB/LV	STAY GRND, WOOD POLE, ROCK BOLT, LV	D-OHC-H103-SD-001
710022	STAY/G/STSF/RB/HV	STAY GRND, STOBIE STEEL FACE, ROCK BOLT, HV	D-OHC-H103-SD-001
710023	STAY/G/STSF/RB/LV	STAY GRND, STOBIE STEEL FACE, ROCK BOLT, LV	D-OHC-H103-SD-001
710024	OH/STAY/POLEATTACH/STOBCF	OH, STAY STOBIE CONC FACE POLE ATTACH	D-OHC-H101-SD-001
710025	STAY/G/T/200-SCREW/HV	STAY GRND, TITAN POLE, 200MM SCREW, HV	D-OHC-H102-SD-001
710026	STAY/G/W/B/HV	STAY GRND, WOOD POLE, BLOCK, HV	D-OHC-H104-SD-001
710027	STAY/G/W/B/LV	STAY GRND, WOOD POLE, BLOCK, LV	D-OHC-H104-SD-001
710028	STAY/G/STSF/B/HV	STAY GRND, STOBIE STEEL FACE, BLOCK, HV	D-OHC-H104-SD-001

710029	STAY/G/STSF/B/LV	STAY GRND, STOBIE STEEL FACE, BLOCK, LV	D-OHC-H104-SD-001
710030	STAY/G/T/300-SCREW/HV	STAY GRND, TITAN POLE, 300MM SCREW, HV	D-OHC-H102-SD-001
710031	STAY/G/STCF/200-SCREW/HV	STAY GRND, STOBIE CONC FACE, 200MM SCREW, HV	D-OHC-H102-SD-001
710032	STAY/V/W/200-SCREW/HV	STAY VERT, WOOD POLE, 200MM SCREW, HV	D-OHC-H105-SD-002
710033	STAY/V/W/300-SCREW/HV	STAY VERT, WOOD POLE, 300MM SCREW, HV	D-OHC-H105-SD-002
710034	STAY/V/STSF/200-SCREW/HV	STAY VERT, STOBIE ST FACE, 200MM SCREW, HV	D-OHC-H105-SD-002
710035	STAY/V/STSF/300-SCREW/HV	STAY VERT, STOBIE ST FACE, 300MM SCREW, HV	D-OHC-H105-SD-002
710036	STAY/G/STCF/300-SCREW/HV	STAY GRND, STOBIE CONC FACE, 300MMSCREW, HV	D-OHC-H102-SD-001
710037	STAY/G/T/200-SCREW/LV	STAY GRND, TITAN POLE, 200MM SCREW, LV	D-OHC-H102-SD-001
710038	STAY/G/T/300-SCREW/LV	STAY GRND, TITAN POLE, 300MM SCREW, LV	D-OHC-H102-SD-001
710039	STAY/G/STCF/200-SCREW/LV	STAY GRND, STOBIE CONC FACE, 200MM SCREW, LV	D-OHC-H102-SD-001
710040	STAY/G/STCF/300-SCREW/LV	STAY GRND, STOBIE CONC FACE, 300MM SCREW, LV	D-OHC-H102-SD-001
710041	STAY/A/W/HV	STAY AERIAL, WOOD POLE, HV	D-OHC-H106-SD-001
710043	STAY/A/STSF/HV	STAY AERIAL, STOBIE STEEL FACE, HV	D-OHC-H106-SD-001
710044	STAY/A/STSF/LV	STAY AERIAL, STOBIE STEEL FACE, LV	D-OHC-H106-SD-001
710045	STAY/G/T/RB/HV	STAY GRND, TITAN POLE, ROCK BOLT, HV	D-OHC-H103-SD-001
710046	STAY/G/STCF/RB/HV	STAY GRND, STOBIE CONC FACE, ROCK BOLT, HV	D-OHC-H103-SD-001
710047	STAY/G/T/RB/LV	STAY GRND, TITAN POLE, ROCK BOLT, LV	D-OHC-H103-SD-001
710072	STAY/A/W/LV	STAY AERIAL, WOOD POLE, LV	D-OHC-H106-SD-001
710780	STAY/G/STCF/RB/LV	STAY GRND, STOBIE CONC FACE, ROCK BOLT, LV	D-OHC-H103-SD-001
710781	STAY/G/T/B/HV	STAY GRND, TITAN POLE, BLOCK, HV	D-OHC-H104-SD-001
710782	STAY/G/STCF/B/HV	STAY GRND, STOBIE CONC FACE, BLOCK, HV	D-OHC-H104-SD-001
710783	STAY/G/T/B/LV	STAY GRND, TITAN POLE, BLOCK, LV	D-OHC-H104-SD-001
710784	STAY/G/STCF/B/LV	STAY GRND, STOBIE CONC FACE, BLOCK, LV	D-OHC-H104-SD-001
710785	STAY/A/T/HV	STAY AERIAL, TITAN POLE, HV	D-OHC-H106-SD-001
710786	STAY/A/STCF/HV	STAY AERIAL, STOBIE CONC FACE, HV	D-OHC-H106-SD-001
710787	STAY/A/T/LV	STAY AERIAL, TITAN POLE, LV	D-OHC-H106-SD-001
710788	STAY/A/STCF/LV	STAY AERIAL, STOBIE CONC FACE, LV	D-OHC-H106-SD-001
710789	STAY/V/T/200-SCREW/HV	STAY VERT, TITAN POLE, 200MM SCREW, HV	D-OHC-H105-SD-002
710790	STAY/V/T/300-SCREW/HV	STAY VERT, TITAN POLE, 300MM SCREW, HV	D-OHC-H105-SD-002

710791	STAY/V/STCF/200-SCREW/HV	STAY VERT, STOBIE CONC FACE,200MM SCREW, HV	D-OHC-H105-SD-002
710792	STAY/V/STCF/300-SCREW/HV	STAY VERT, STOBIE CONC FACE,300MM SCREW, HV	D-OHC-H105-SD-002
710793	STAY/V/W/RB/HV	STAY VERT, WOOD POLE, ROCK BOLT, HV	D-OHC-H105-SD-002
710794	STAY/V/T/RB/HV	STAY VERT, TITAN POLE, ROCK BOLT, HV	D-OHC-H105-SD-002
710795	STAY/V/STSF/RB/HV	STAY VERT, STOBIE STEEL FACE, ROCK BOLT, HV	D-OHC-H105-SD-002
710796	STAY/V/STCF/RB/HV	STAY VERT, STOBIE CONC FACE, ROCK BOLT, HV	D-OHC-H105-SD-002
710797	STAY/V/W/200-SCREW/LV	STAY VERT, WOOD POLE, 200MM SCREW, LV	D-OHC-H105-SD-002
710798	STAY/V/W/300-SCREW/LV	STAY VERT, WOOD POLE, 300MM SCREW, LV	D-OHC-H105-SD-002
710799	STAY/V/T/200-SCREW/LV	STAY VERT, TITAN POLE, 200MM SCREW, LV	D-OHC-H105-SD-002
710800	STAY/V/T/300-SCREW/LV	STAY VERT, TITAN POLE, 300MM SCREW, LV	D-OHC-H105-SD-002
710801	STAY/V/STSF/200-SCREW/LV	STAY VERT, STOBIE ST FACE, 200MM SCREW, LV	D-OHC-H105-SD-002
710802	STAY/V/STCF/200-SCREW/LV	STAY VERT, STOBIE CONC FACE, 200MM SCREW, LV	D-OHC-H105-SD-002
710803	STAY/V/STSF/300-SCREW/LV	STAY VERT, STOBIE ST FACE, 300MM SCREW, LV	D-OHC-H105-SD-002
710804	STAY/V/STCF/300-SCREW/LV	STAY VERT, STOBIE CONC FACE, 300MM SCREW, LV	D-OHC-H105-SD-002
710805	STAY/V/W/RB/LV	STAY VERT, WOOD POLE, ROCK BOLT, HV	D-OHC-H105-SD-002
710806	STAY/V/T/RB/LV	STAY VERT, TITAN POLE, ROCK BOLT, HV	D-OHC-H105-SD-002
710807	STAY/V/STSF/RB/LV	STAY VERT, STOBIE STEEL FACE, ROCK BOLT, LV	D-OHC-H105-SD-002
710808	STAY/V/STCF/RB/LV	STAY VERT, STOBIE CONC FACE, ROCK BOLT, LV	D-OHC-H105-SD-002