

7.0 protected areas

Objective

To ensure values of Protected Areas are maintained when undertaking maintenance, new works, inspections and emergency works in protected areas.

Why is this important?

The Parks and Wildlife Service, Local Government, Private Landholders and Forestry Tasmania manage more than two million hectares of protected areas or 37% of the total area of Tasmania.

This protected area network includes National Parks, Reserves, Historic Sites, World Heritage Areas, Private Conservation Covenants and Reserves, Council Reserves and Roadside Conservation Sites. Since 2012 TasNetworks has had a memorandum of understanding with the Parks and Wildlife Service to achieve protections of significant values of the Tasmanian Reserve system and efficient maintenance of electricity infrastructure within those reserves.

It allows maintenance of low impact activities to be undertaken in accordance with the MOU and a variety of assessment techniques for higher impact activities.

'Switch on' to your responsibilities:

- Check with your Team Leader that low impact works (e.g. repair and maintenance of access tracks) involving ground or vegetation disturbance within a protected area has been assessed and consent obtained from the land manager. These Category A activities require two weeks notification of the Parks and Wildlife Service prior to activity commencing
- For higher impact activities a Reserve Activity Assessment may be required by Parks and Wildlife Service and will take 14 weeks to gain approval

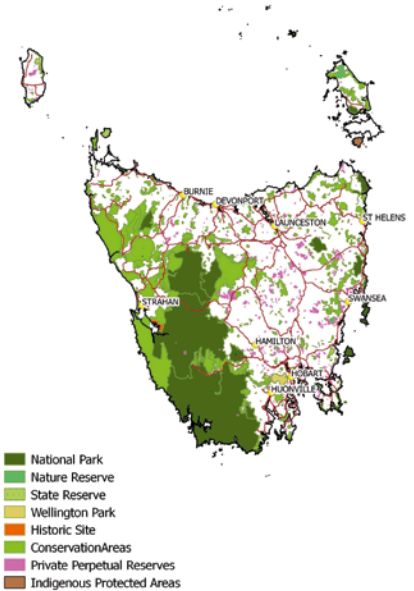


kunanyi/Mount Wellington Park Reserve

- Notify the land manager prior to new works, routine maintenance and inspections within a protected area
- Modify work activities with consideration to local advice obtained from the land manager or authority
- Carry out work activities in accordance with permits (if applicable) and/or works authority
- Notify the land manager as soon as reasonably practical after emergency work in a protected area.

Further information:

- *The ZoNe - Environmental Considerations - Distribution Lines Design, Construction and Decommissioning HSE Operational Standard*
- *The ZoNe - OBL 9A and OBL 9B EEOP Tasmanian Reserve System Memorandum of Understanding*
- *World Heritage Management Plan*
- *Parks and Wildlife Tasmania - Reserve Listing*
- *HSE Team.*



Map of Tasmania's protected areas

DID YOU KNOW?

Australia has 65 sites listed on the RAMSAR Convention on wetlands, 10 of which are located in Tasmania. These wetlands are recognised as internationally important and are registered on a list of the Convention on Wetlands.