



Fact sheet: Irrigators and Transmission Lines

Information for irrigation equipment operators

Working near power lines can be very dangerous and it is important that safe distances are maintained. If you are undertaking any work, you need to know the relevant guidelines to ensure your safety and the safety of those around you.

What must you do before operating an irrigation scheme near transmission lines?

Transmission lines operate up to 220,000 volts. Contact with transmission lines is extremely dangerous and even close proximity can be fatal.

If you are planning to operate irrigation equipment on a property that has electrical transmission lines on it, you need to contact TasNetworks for permission.

TasNetworks will determine whether or not there is sufficient clearance between the transmission lines and the irrigator to ensure safe operation of our transmission system. Once we have made our assessment, we will talk to you about what needs to be done so that you can operate your irrigator safely.

TasNetworks requires a safe minimum clearance between the highest point of your irrigator and the lowest point of the overhead transmission line at its maximum operating temperature.

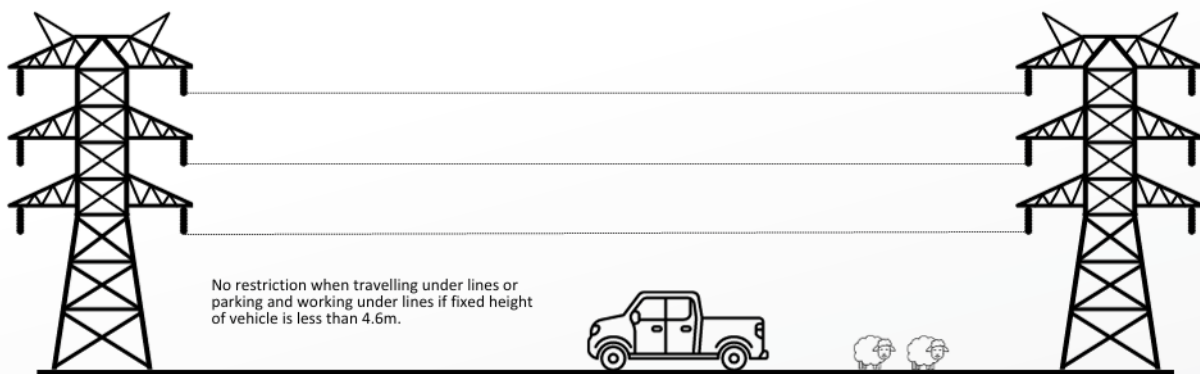
Do not attempt to directly measure the height of overhead power lines, as this may cause serious injury or death. Let us safely do this for you.

Modifications to transmission lines to accommodate large irrigators are expensive and in most cases, the property owner is responsible for the cost.

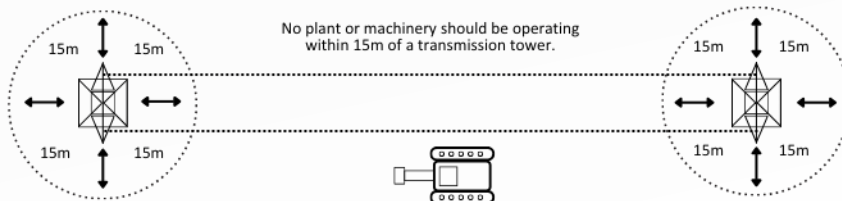
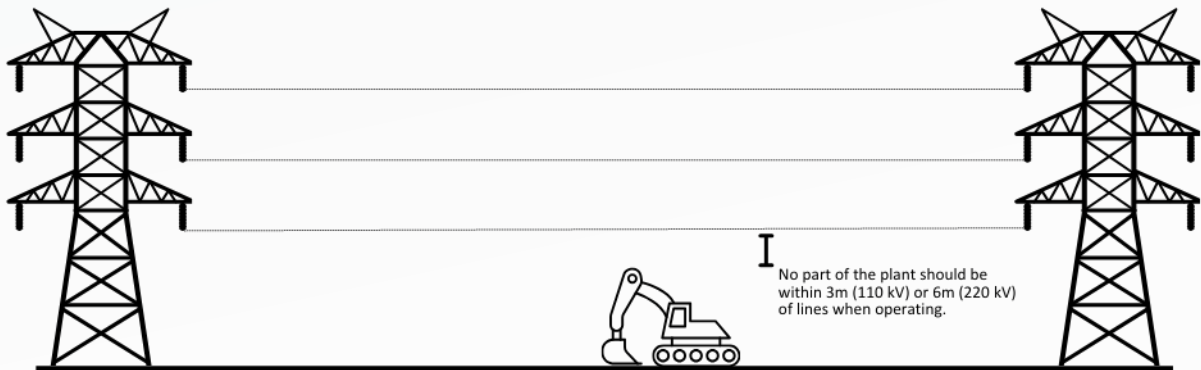
Safe work habits on properties with transmission lines

- Complete a risk assessment to identify and put in place the appropriate control measures to prevent any hazards (including work practices and procedures) that may have potential to harm you or those around you.
- Assign a competent safety observer to guide the relocation and positioning of irrigators and pipes near overhead transmission lines. Only undertake maintenance of irrigators and other large machinery well away from transmission lines and do not park or store them within the transmission line easement. Irrigators should not be parked parallel to the transmission line.
- Machinery measuring over 4.6m in height has a high risk of contact with overhead lines and should be closely monitored to ensure that the required minimum approach distances are maintained at all times. More information about safe approach distances is provided on the following pages.
- Irrigation pipes should always be carried horizontally as they are generally 7-12m in length and when lifted vertically could easily contact power lines.
- Keep irrigator spray to at least two metres below any power lines. As water conducts electricity, the irrigator may become energised if the irrigator spray comes too close to power lines, which could cause electrocution.

Operating vehicles and mobile plants in proximity to TasNetworks transmission structures



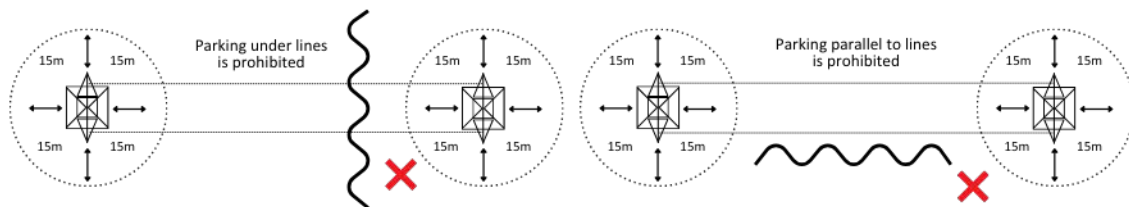
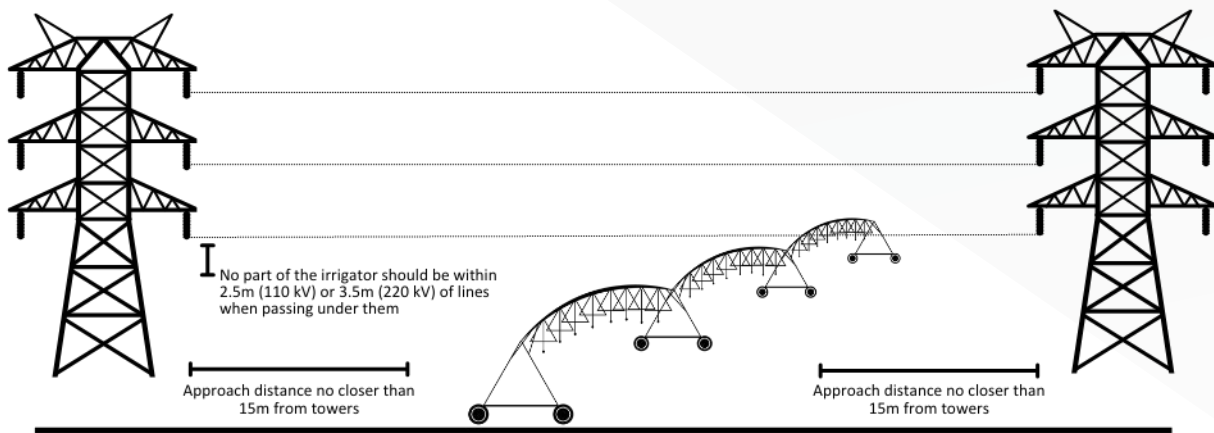
	Task	110kV	220kV
Vehicles with a fixed height of less than 4.6m (utes, tractors, trucks, harvesters)	Travelling under lines	No restriction	No restriction
	Parking and working under lines	No restriction	No restriction



Mobile plant with a possible operating height greater than 4.6m (cranes, excavators)

Task	110kV	220kV
Travelling under lines (not operating)	No restriction if height of plant is less than 4.6m high while travelling	No restriction if height of plant is less than 4.6m high while travelling
Operating	No part of the plant should be within 3m of lines	No part of the plant should be within 6m of lines
	No plant should be operating within 15m of a transmission tower	





**Irrigators
(unable to be stood on)**

Task	110kV	220kV
Fixed Pivot points	Must be located outside easement	
Approach distance to structures	No closer than 15m. A physical barrier shall be installed to ensure the irrigator can't physically come within 15m of structure	
Passing under	No part of the irrigator should be within 2.5m of lines	No part of the irrigator should be within 3.5m of lines
End gun water jet	Minimum 3m below the conductors	
Parking under lines	Prohibited	Prohibited
Parking parallel to lines	Prohibited	Prohibited

For more information

If you are unsure of the type of electricity transmission infrastructure on your property, please contact TasNetworks before operating irrigators or plants/machinery.

To find out more visit: www.tasnetworks.com.au/safety/working-near-powerlines/look-up,-look-out

Or write to us at: TasNetworks | PO Box 606 Moonah TAS 7009 | Phone: 1300 137 008

See *Safe Work Australia's Agricultural work near overhead electric lines, Information Sheet* for further advice on managing risk when working near overhead power lines.

www.safeworkaustralia.gov.au/system/files/documents/1703/agricultural-work-near-ohel-information-sheet.pdf